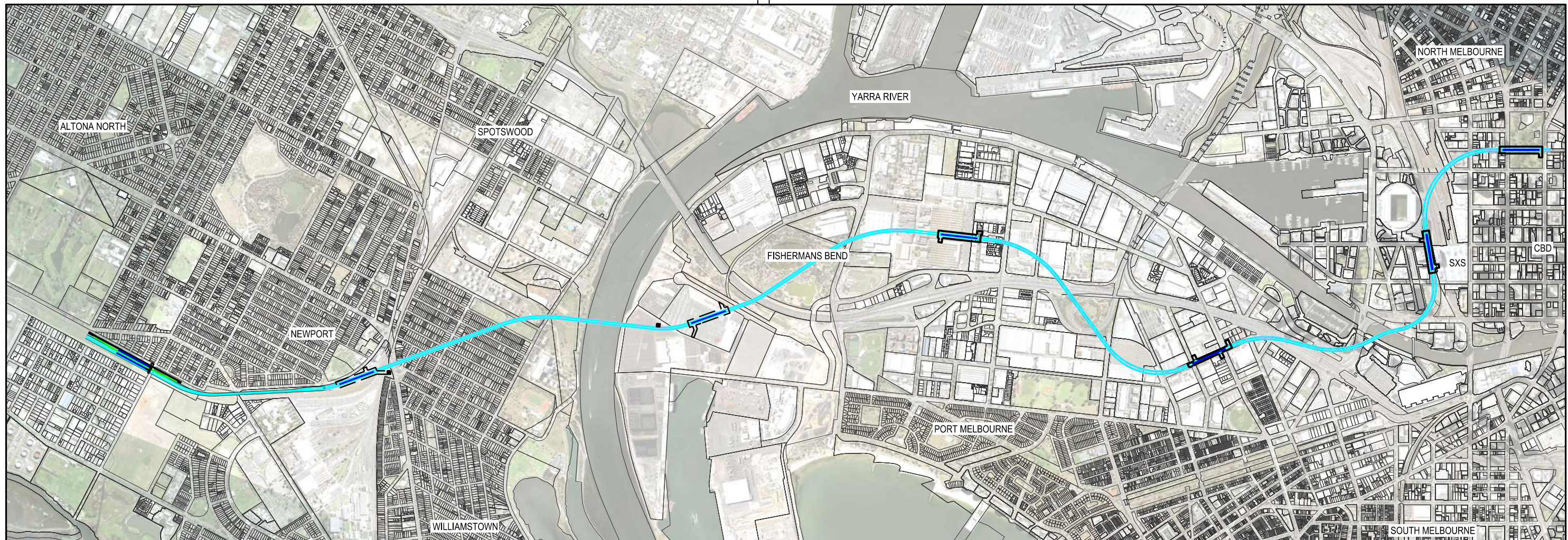


Certified By:

(BLOCK LETTERS)

(SIGNATURE)

(DATE)



FISHERMANS BEND METRO
 PREFERRED ALIGNMENT - OPTION 5A
 COVER SHEET AND DRAWING INDEX

- 252532-DRG-C0059 - PREFERRED ALIGNMENT OPTION 5A (COVER SHEET)
- 252532-DRG-C0060 - PREFERRED ALIGNMENT OPTION 5A (SHEET 1)
- 252532-DRG-C0061 - PREFERRED ALIGNMENT OPTION 5A (SHEET 2)
- 252532-DRG-C0062 - PREFERRED ALIGNMENT OPTION 5A (SHEET 3)
- 252532-DRG-C0063 - PREFERRED ALIGNMENT OPTION 5A (SHEET 4)
- 252532-DRG-C0064 - PREFERRED ALIGNMENT OPTION 5A (SHEET 5)
- 252532-DRG-C0065 - PREFERRED ALIGNMENT OPTION 5A (SHEET 6)
- 252532-DRG-C0066 - PREFERRED ALIGNMENT OPTION 5A (SHEET 7)
- 252532-DRG-C0067 - PREFERRED ALIGNMENT OPTION 5A (SHEET 8)
- 252532-DRG-C0068 - PREFERRED ALIGNMENT OPTION 5A (SHEET 9)
- 252532-DRG-C0069 - PREFERRED ALIGNMENT OPTION 5A (SHEET 10)
- 252532-DRG-C0070 - PREFERRED ALIGNMENT OPTION 5A (SHEET 11)
- 252532-DRG-C0071 - PREFERRED ALIGNMENT OPTION 5A (SHEET 12)
- 252532-DRG-C0072 - PREFERRED ALIGNMENT OPTION 5A (SHEET 13)
- 252532-DRG-C0073 - PREFERRED ALIGNMENT OPTION 5A (SHEET 14)
- 252532-DRG-C0074 - PREFERRED ALIGNMENT OPTION 5A (SHEET 15)
- 252532-DRG-C0075 - PREFERRED ALIGNMENT OPTION 5A (SHEET 15)

PRELIMINARY DRAWING
FOR DISCUSSION PURPOSES ONLY

9:24:16 AM
1/12/2016

AURECON		P1	15.11.16	PRELIMINARY ISSUE - POST ALIGNMENT SELECTION WORK SHOP	R.M.H.	J.E.B.		
Revised By	In Serv	Rev.	Date	Description	Designed	Checked	Ind. Rev.	Approv.

Consultant



www.aurecongroup.com



Environment, Land, Water and Planning

This drawing has been prepared by, or compiled from information provided by, persons other than VicTrack. To the maximum extent permissible by law, VicTrack takes no responsibility for, and makes no representations in relation to, the completeness, accuracy or quality of any information contained in this drawing. Each user of this drawing releases VicTrack from all and any loss, damage, cost, expense or liability in relation to the use of, or any reliance on, this drawing or the information contained in it.

All written dimensions take precedence over scaled dimensions.

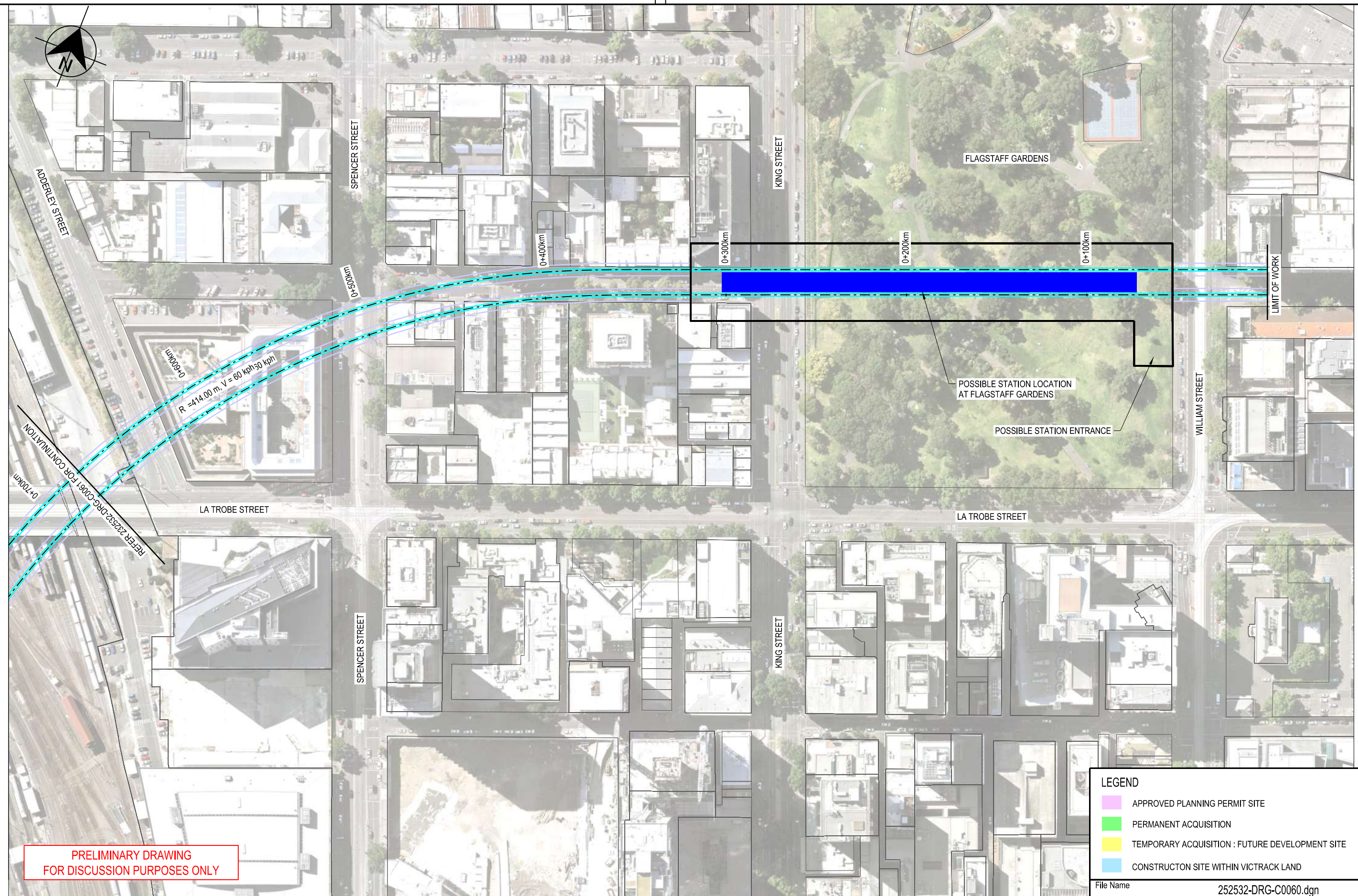
This drawing is provided only for the information of the person or organisation to whom VicTrack provides it. It may not be provided to, or used by, any other person without VicTrack's prior written consent.

RAILWAY TRACK AND CIVIL
MELBOURNE
 FISHERMANS BEND METRO
 FEASIBILITY STUDY
 PREFERRED ALIGNMENT OPTION 5A

Up Location East. North. ID#	Down Location East. North. ID#	Datum MGA Z55
------------------------------	--------------------------------	---------------

File Name 252532-DRG-C0059.dgn		Drawn By R.HOWELLS	Designed By R.HOWELLS
File Name 252532-DRG-C0059.dgn		Checked By J.BELCHER	Ind. Review
Sheet No. 01 of 01		Approved	Approval Date
In Serv.		Drawing Number	
Scale N.T.S.	Sheet Size A3	Revision P1	

(DATE)
 (SIGNATURE)
 (BLOCK LETTERS)
 Certified By:



LEGEND	
	APPROVED PLANNING PERMIT SITE
	PERMANENT ACQUISITION
	TEMPORARY ACQUISITION : FUTURE DEVELOPMENT SITE
	CONSTRUCTION SITE WITHIN VICTRACK LAND

File Name 252532-DRG-C0060.dgn

11/28/2016	9:56:42 AM								
AURECON	P1	15.11.16	PRELIMINARY ISSUE - POST ALIGNMENT SELECTION WORK SHOP	R.M.H.	J.E.B.				
Revised By	In Serv	Rev.	Date	Description	Designed	Checked	Ind. Rev.	Approv.	

Consultant

aurecon
www.aurecongroup.com

VICTORIA State Government | Environment, Land, Water and Planning

This drawing has been prepared by, or compiled from information provided by, persons other than Victrack. To the maximum extent permissible by law, Victrack takes no responsibility for, and makes no representations in relation to, the completeness, accuracy or quality of any information contained in this drawing. Each user of this drawing releases Victrack from all and any loss, damage, cost, expense or liability in relation to the use of, or any reliance on, this drawing or the information contained in it.

All written dimensions take precedence over scaled dimensions.

This drawing is provided only for the information of the person or organisation to whom Victrack provides it. It may not be provided to, or used by, any other person without Victrack's prior written consent.

RAILWAY TRACK AND CIVIL

MELBOURNE

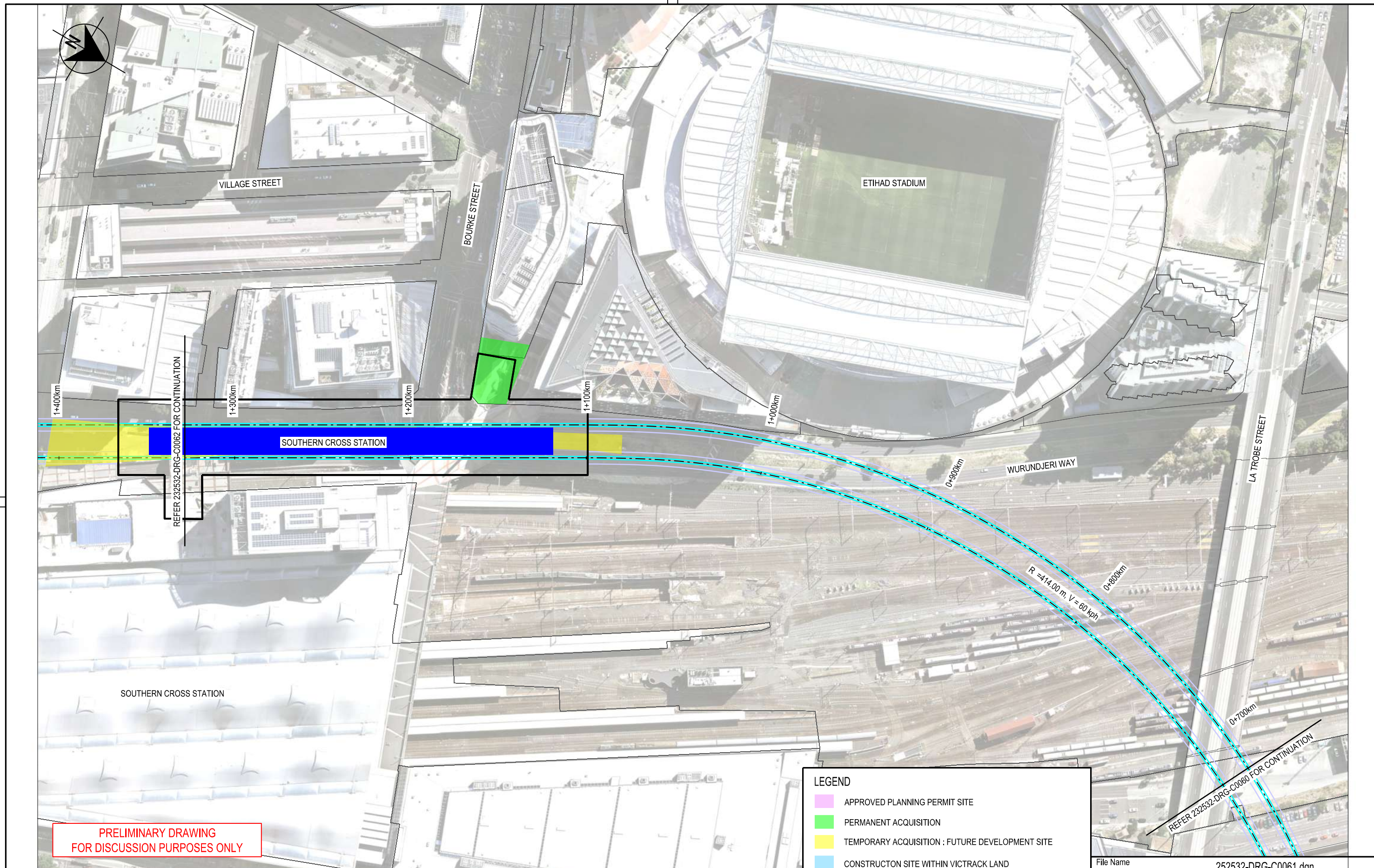
FISHERMANS BEND METRO
FEASIBILITY STUDY
PREFERRED ALIGNMENT OPTION 5A

Up Location	Down Location	Datum
East. North. ID#	East. North. ID#	MGA Z55

VicTrack
ACCESS

File Name	252532-DRG-C0060.dgn	Drawn By	R.HOWELLS	Designed By	R.HOWELLS
Sheet No.	01 of 01	Checked By	J.BELCHER	Ind. Review	
In Serv.		Approved		Approval Date	
Scale	1:2000	Sheet Size	A3	Drawing Number	
				Revision	P1

(DATE)
 (SIGNATURE)
 (BLOCK LETTERS)
 Certified By:



**PRELIMINARY DRAWING
FOR DISCUSSION PURPOSES ONLY**

LEGEND

- APPROVED PLANNING PERMIT SITE
- PERMANENT ACQUISITION
- TEMPORARY ACQUISITION : FUTURE DEVELOPMENT SITE
- CONSTRUCTION SITE WITHIN VICTRACK LAND

File Name 252532-DRG-C0061.dgn

9:56:48 AM

 11/28/2016

Revised By	In Serv	Rev.	Date	Description	Designed	Checked	Ind. Rev.	Approv.
AURECON		P1	15.11.16	PRELIMINARY ISSUE - POST ALIGNMENT SELECTION WORK SHOP	R.M.H.	J.E.B.		

Consultant

aurecon
www.aurecongroup.com

VICTORIA State Government | Environment, Land, Water and Planning

This drawing has been prepared by, or compiled from information provided by, persons other than Victrack. To the maximum extent permissible by law, Victrack takes no responsibility for, and makes no representations in relation to, the completeness, accuracy or quality of any information contained in this drawing. Each user of this drawing releases Victrack from all and any loss, damage, cost, expense or liability in relation to the use of, or any reliance on, this drawing or the information contained in it.

All written dimensions take precedence over scaled dimensions.

This drawing is provided only for the information of the person or organisation to whom Victrack provides it. It may not be provided to, or used by, any other person without Victrack's prior written consent.

RAILWAY TRACK AND CIVIL

MELBOURNE

FISHERMANS BEND METRO

FEASIBILITY STUDY

PREFERRED ALIGNMENT OPTION 5A

Up Location East. North. ID#	Down Location East. North. ID#	Datum MGA Z55
------------------------------	--------------------------------	---------------

VicTrack
ACCESS

File Name 252532-DRG-C0061.dgn

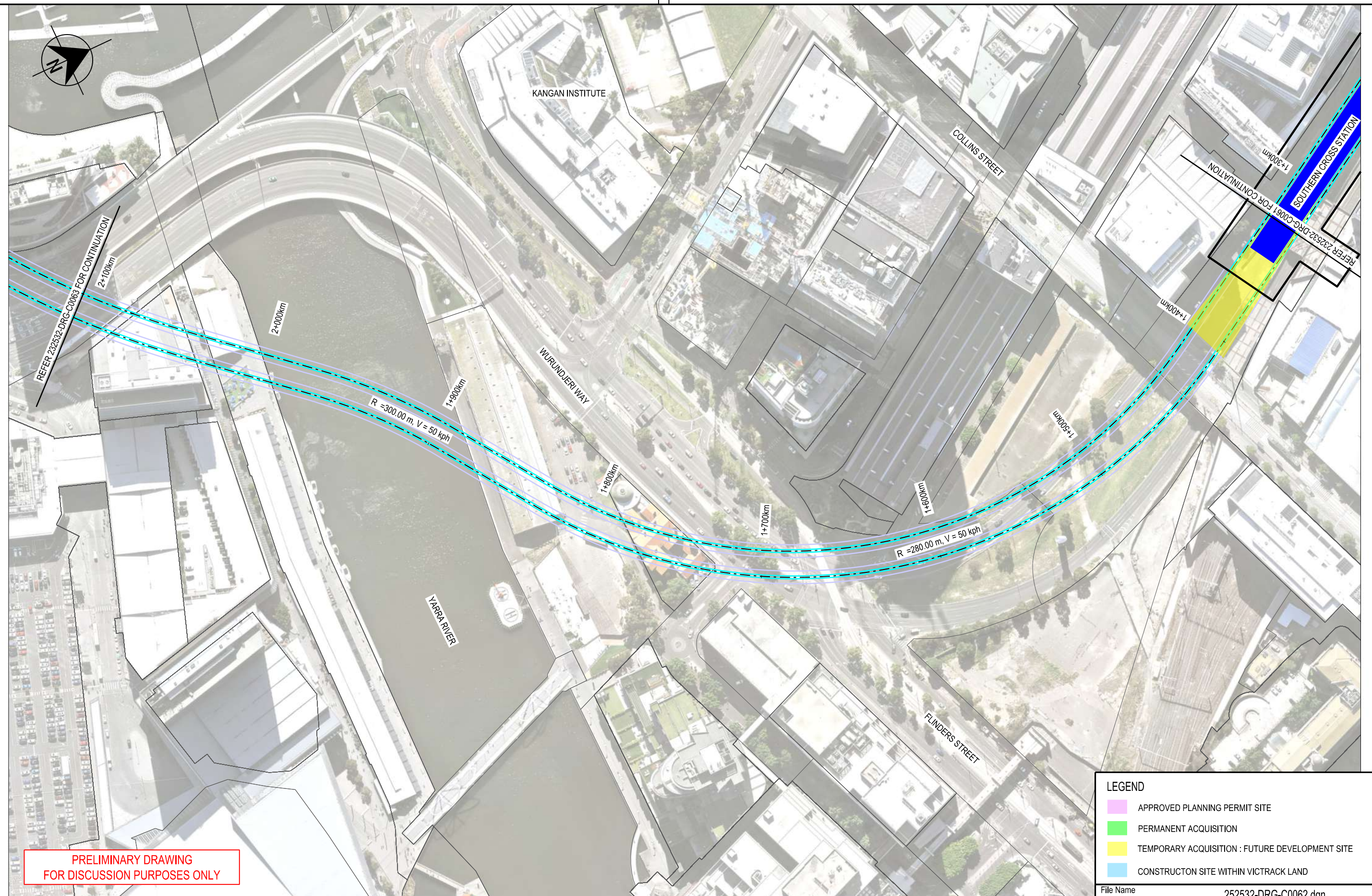
Sheet No. **01 of 01**

In Serv.

Scale 1:2000 Sheet Size A3

Drawn By R.HOWELLS	Designed By R.HOWELLS
Checked By J.BELCHER	Ind. Review
Approved	Approval Date
Drawing Number	Revision P1

(DATE)
 (SIGNATURE)
 (BLOCK LETTERS)
 Certified By:



PRELIMINARY DRAWING
 FOR DISCUSSION PURPOSES ONLY

LEGEND

- APPROVED PLANNING PERMIT SITE
- PERMANENT ACQUISITION
- TEMPORARY ACQUISITION : FUTURE DEVELOPMENT SITE
- CONSTRUCTION SITE WITHIN VICTRACK LAND

File Name 252532-DRG-C0062.dgn

9:56:54 AM
 11/28/2016

AURECON	P1	15.11.16	PRELIMINARY ISSUE - POST ALIGNMENT SELECTION WORK SHOP	R.M.H.	J.E.B.		
Revised By	In Serv	Rev.	Date	Description	Designed	Checked	Ind. Rev. Approv.

Consultant

aurecon

www.aurecongroup.com

VICTORIA

State Government | Environment, Land, Water and Planning

This drawing has been prepared by, or compiled from information provided by, persons other than Victrack. To the maximum extent permissible by law, Victrack takes no responsibility for, and makes no representations in relation to, the completeness, accuracy or quality of any information contained in this drawing. Each user of this drawing releases Victrack from all and any loss, damage, cost, expense or liability in relation to the use of, or any reliance on, this drawing or the information contained in it.

All written dimensions take precedence over scaled dimensions.

This drawing is provided only for the information of the person or organisation to whom Victrack provides it. It may not be provided to, or used by, any other person without Victrack's prior written consent.

RAILWAY TRACK AND CIVIL
 MELBOURNE
 FISHERMANS BEND METRO
 FEASIBILITY STUDY
 PREFERRED ALIGNMENT OPTION 5A

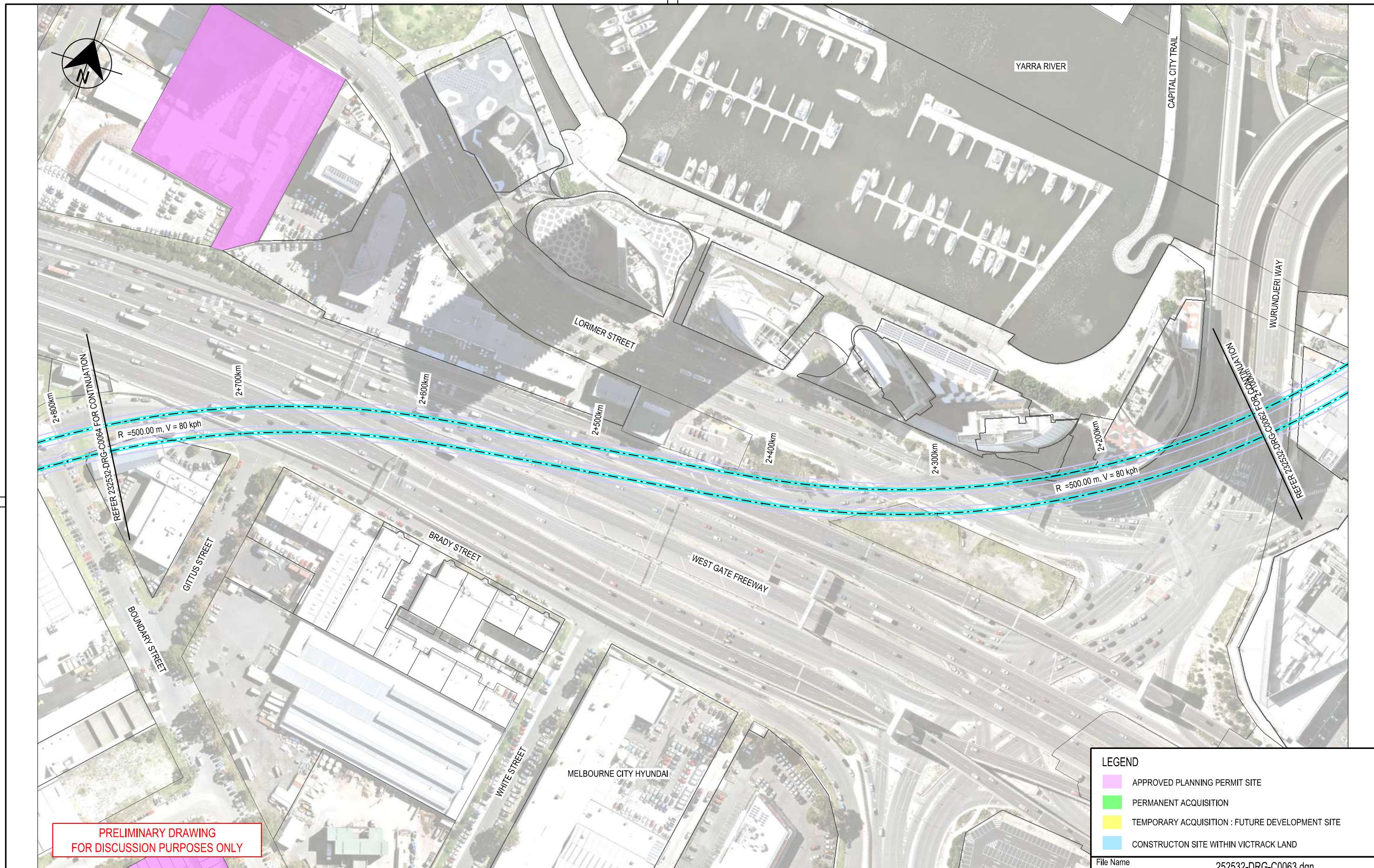
Up Location	Down Location	Datum
East.	East.	MGA Z55
North.	North.	
ID#	ID#	

VicTrack

ACCESS

File Name 252532-DRG-C0062.dgn	Drawn By R.HOWELLS	Designed By R.HOWELLS
Sheet No. 01 of 01	Checked By J.BELCHER	Ind. Review
In Serv.	Approved	Approval Date
Scale 1:2000	Sheet Size A3	Drawing Number
		P1

Certified By: (BLOCK LETTERS) (SIGNATURE) (DATE)



PRELIMINARY DRAWING
FOR DISCUSSION PURPOSES ONLY

LEGEND

- APPROVED PLANNING PERMIT SITE
- PERMANENT ACQUISITION
- TEMPORARY ACQUISITION : FUTURE DEVELOPMENT SITE
- CONSTRUCTION SITE WITHIN VICTRACK LAND

File Name 252532-DRG-C0063.dgn

11/28/2016 9:56:59 AM

Revised By	In Serv	Rev.	Date	Description	Designed	Checked	Ind. Rev.	Approv.
AURECON		P1	15.11.16	PRELIMINARY ISSUE - POST ALIGNMENT SELECTION WORK SHOP	R.M.H.	J.E.B.		

Consultant

aurecon

www.aurecongroup.com

VICTORIA

State Government | Environment, Land, Water and Planning

This drawing has been prepared by, or compiled from information provided by, persons other than Victrack. To the maximum extent permissible by law, Victrack takes no responsibility for, and makes no representations in relation to, the completeness, accuracy or quality of any information contained in this drawing. Each user of this drawing releases Victrack from all and any loss, damage, cost, expense or liability in relation to the use of, or any reliance on, this drawing or the information contained in it.

All written dimensions take precedence over scaled dimensions.

This drawing is provided only for the information of the person or organisation to whom Victrack provides it. It may not be provided to, or used by, any other person without Victrack's prior written consent.

RAILWAY TRACK AND CIVIL
MELBOURNE
FISHERMANS BEND METRO
FEASIBILITY STUDY
PREFERRED ALIGNMENT OPTION 5A

Up Location	Down Location	Datum
East. North. ID#	East. North. ID#	MGA Z55

VicTrack

ACCESS

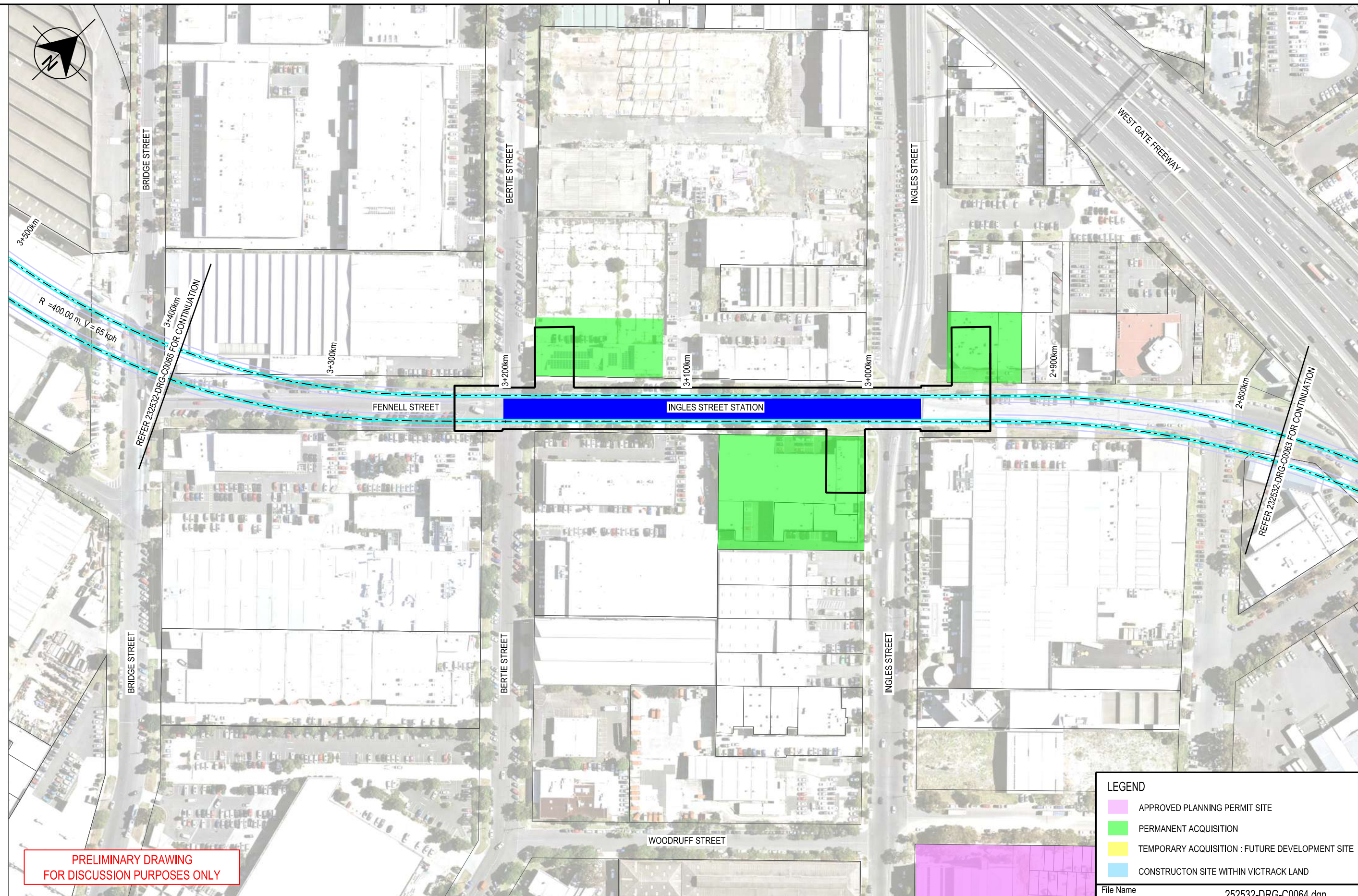
File Name 252532-DRG-C0063.dgn	Drawn By R.HOWELLS	Designed By R.HOWELLS
Sheet No. 01 of 01	Checked By J.BELCHER	Ind. Review
In Serv.	Approved	Approval Date
Scale 1:2000	Sheet Size A3	Drawing Number
		P1

Certified By:

(BLOCK LETTERS)

(SIGNATURE)

(DATE)



PRELIMINARY DRAWING FOR DISCUSSION PURPOSES ONLY

LEGEND	
	APPROVED PLANNING PERMIT SITE
	PERMANENT ACQUISITION
	TEMPORARY ACQUISITION : FUTURE DEVELOPMENT SITE
	CONSTRUCTION SITE WITHIN VICTRACK LAND

File Name		252532-DRG-C0064.dgn	
VicTrack <small>ACCESS</small>		Drawn By	Designed By
File Name		R.HOWELLS	R.HOWELLS
Sheet No.		Checked By	Ind. Review
01 of 01		J.BELCHER	
In Serv.		Approved	Approval Date
Scale		Drawing Number	Revision
1:2000	Sheet Size		P1
	A3		

11/28/2016 9:57:04 AM

Revised By	In Serv	Rev.	Date	Description	Designed	Checked	Ind. Rev.	Approv.
AURECON		P1	15.11.16	PRELIMINARY ISSUE - POST ALIGNMENT SELECTION WORK SHOP	R.M.H.	J.E.B.		

Consultant



www.aurecongroup.com



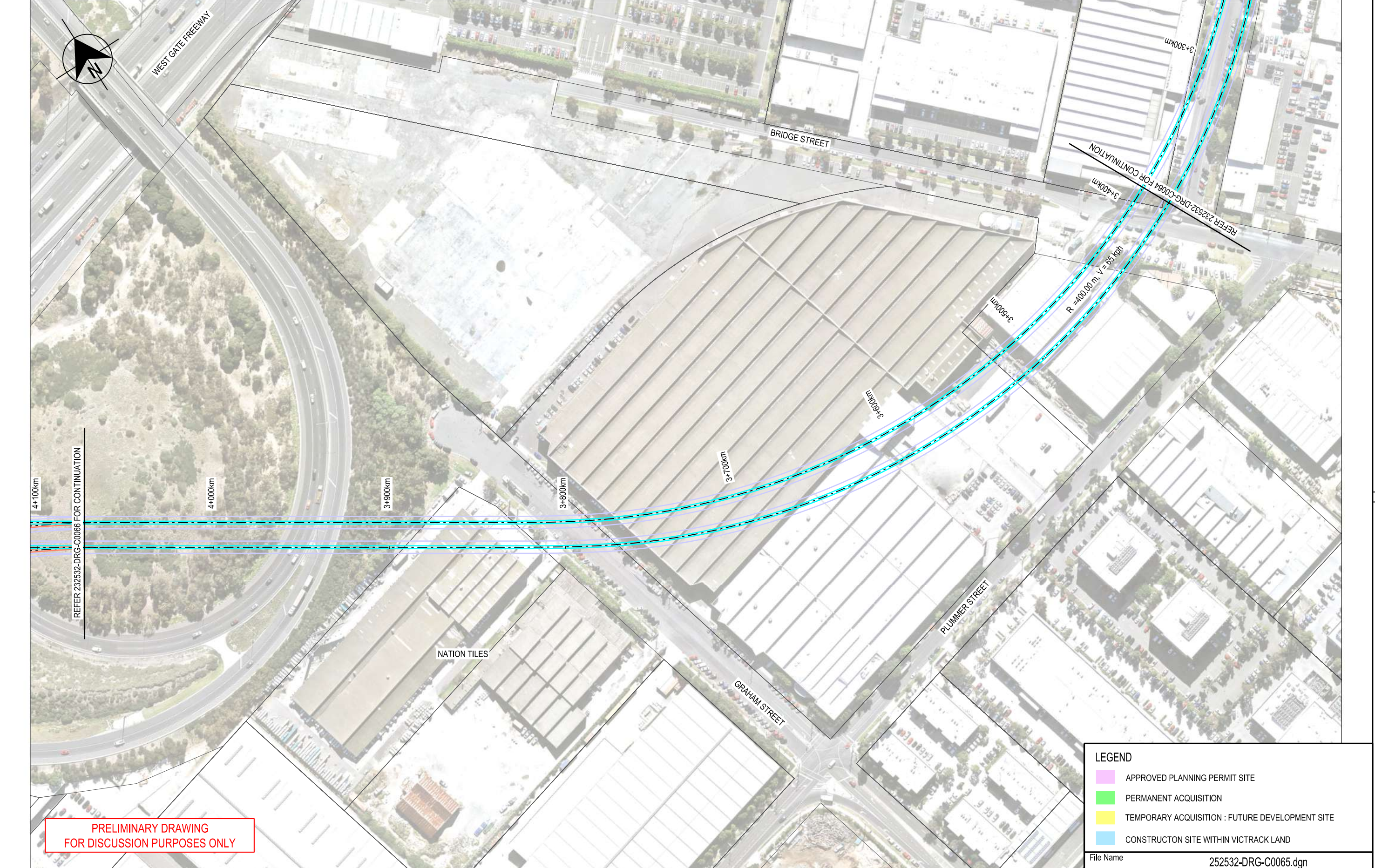
This drawing has been prepared by, or compiled from information provided by, persons other than Victrack. To the maximum extent permissible by law, Victrack takes no responsibility for, and makes no representations in relation to, the completeness, accuracy or quality of any information contained in this drawing. Each user of this drawing releases Victrack from all and any loss, damage, cost, expense or liability in relation to the use of, or any reliance on, this drawing or the information contained in it.

All written dimensions take precedence over scaled dimensions.

This drawing is provided only for the information of the person or organisation to whom Victrack provides it. It may not be provided to, or used by, any other person without Victrack's prior written consent.

RAILWAY TRACK AND CIVIL		
MELBOURNE		
FISHERMANS BEND METRO		
FEASIBILITY STUDY		
PREFERRED ALIGNMENT OPTION 5A		
Up Location	Down Location	Datum
East. North. ID#	East. North. ID#	MGA Z55

Certified By: (BLOCK LETTERS)
(SIGNATURE)
(DATE)



LEGEND	
	APPROVED PLANNING PERMIT SITE
	PERMANENT ACQUISITION
	TEMPORARY ACQUISITION : FUTURE DEVELOPMENT SITE
	CONSTRUCTION SITE WITHIN VICTRACK LAND

File Name 252532-DRG-C0065.dgn

11/28/2016	9:57:11 AM										
AURECON	P1	15.11.16	PRELIMINARY ISSUE - POST ALIGNMENT SELECTION WORK SHOP	R.M.H.	J.E.B.						
Revised By	In Serv	Rev.	Date	Description	Designed	Checked	Ind. Rev.	Approv.			

Consultant

www.aurecongroup.com

Environment, Land, Water and Planning

This drawing has been prepared by, or compiled from information provided by, persons other than Victrack. To the maximum extent permissible by law, Victrack takes no responsibility for, and makes no representations in relation to, the completeness, accuracy or quality of any information contained in this drawing. Each user of this drawing releases Victrack from all and any loss, damage, cost, expense or liability in relation to the use of, or any reliance on, this drawing or the information contained in it.

All written dimensions take precedence over scaled dimensions.

This drawing is provided only for the information of the person or organisation to whom Victrack provides it. It may not be provided to, or used by, any other person without Victrack's prior written consent.

RAILWAY TRACK AND CIVIL
MELBOURNE
FISHERMANS BEND METRO
FEASIBILITY STUDY
PREFERRED ALIGNMENT OPTION 5A

Up Location East. North. ID#	Down Location East. North. ID#	Datum MGA Z55
------------------------------	--------------------------------	---------------

File Name 252532-DRG-C0065.dgn

Sheet No. 01 of 01

In Serv.

Scale 1:2000 Sheet Size A3

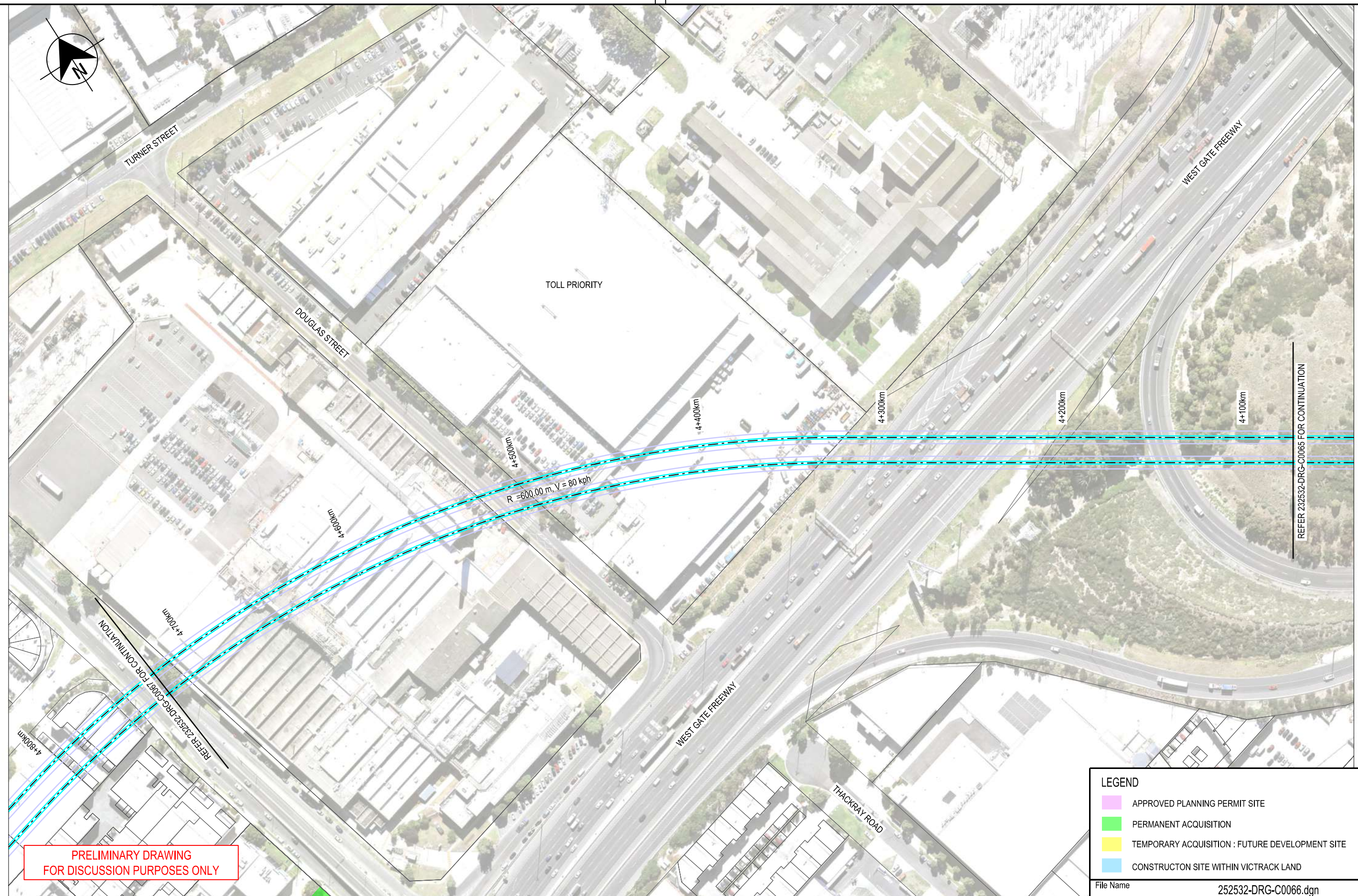
Drawn By R.HOWELLS	Designed By R.HOWELLS
Checked By J.BELCHER	Ind. Review
Approved	Approval Date
Drawing Number	Revision P1

Certified By:

(BLOCK LETTERS)

(SIGNATURE)

(DATE)



PRELIMINARY DRAWING FOR DISCUSSION PURPOSES ONLY

REFER 252532-DRG-C0066 FOR CONTINUATION

LEGEND	
	APPROVED PLANNING PERMIT SITE
	PERMANENT ACQUISITION
	TEMPORARY ACQUISITION : FUTURE DEVELOPMENT SITE
	CONSTRUCTION SITE WITHIN VICTRACK LAND

File Name 252532-DRG-C0066.dgn

Revised By	In Serv	Rev.	Date	Description	Designed	Checked	Ind. Rev.	Approv.
AURECON		P1	15.11.16	PRELIMINARY ISSUE - POST ALIGNMENT SELECTION WORK SHOP	R.M.H.	J.E.B.		

Consultant

www.aurecongroup.com

Environment, Land, Water and Planning

This drawing has been prepared by, or compiled from information provided by, persons other than Victrack. To the maximum extent permissible by law, Victrack takes no responsibility for, and makes no representations in relation to, the completeness, accuracy or quality of any information contained in this drawing. Each user of this drawing releases Victrack from all and any loss, damage, cost, expense or liability in relation to the use of, or any reliance on, this drawing or the information contained in it.

All written dimensions take precedence over scaled dimensions.

This drawing is provided only for the information of the person or organisation to whom Victrack provides it. It may not be provided to, or used by, any other person without Victrack's prior written consent.

RAILWAY TRACK AND CIVIL

MELBOURNE

FISHERMANS BEND METRO FEASIBILITY STUDY

PREFERRED ALIGNMENT OPTION 5A

Up Location East. North. ID#	Down Location East. North. ID#	Datum MGA Z55
------------------------------	--------------------------------	---------------

File Name 252532-DRG-C0066.dgn	Drawn By R.HOWELLS	Designed By R.HOWELLS
Sheet No. 01 of 01	Checked By J.BELCHER	Ind. Review
In Serv.	Approved	Approval Date
Scale 1:2000	Sheet Size A3	Drawing Number
		Revision P1

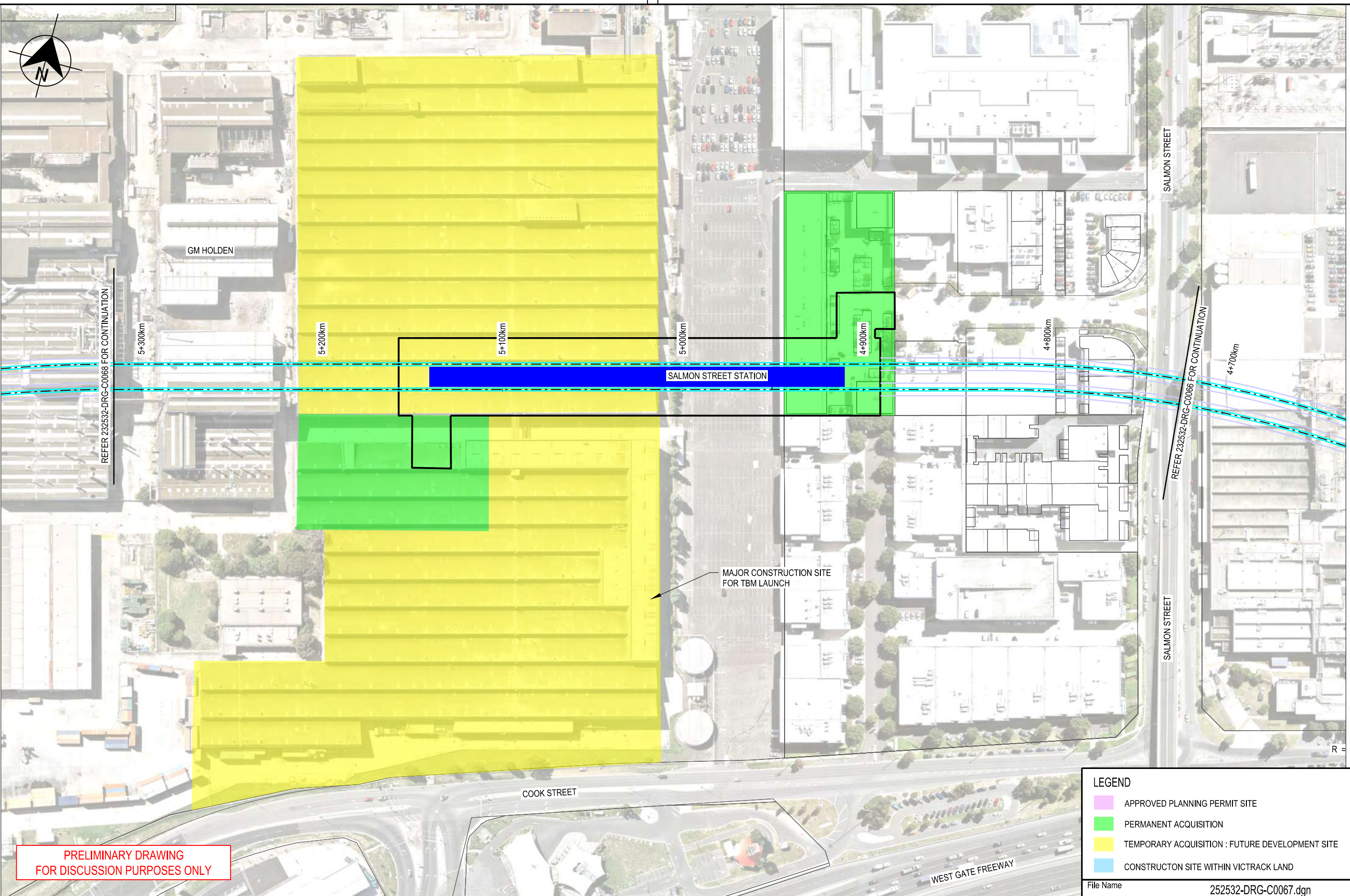
11/28/2016 9:57:20 AM

(DATE)

(SIGNATURE)

(BLOCK LETTERS)

Certified By:



**PRELIMINARY DRAWING
FOR DISCUSSION PURPOSES ONLY**

LEGEND

- APPROVED PLANNING PERMIT SITE
- PERMANENT ACQUISITION
- TEMPORARY ACQUISITION : FUTURE DEVELOPMENT SITE
- CONSTRUCTION SITE WITHIN VICTRACK LAND

File Name 252532-DRG-C0067.dgn

VicTrack
ACCESS

File Name 252532-DRG-C0067.dgn
Sheet No. 01 of 01
In Serv.
Scale 1:2000 Sheet Size A3

Drawn By R.HOWELLS
Checked By J.BELCHER
Approved
Drawing Number

Designed By R.HOWELLS
Ind. Review
Approval Date
Revision **P1**

Consultant

aurecon
www.aurecongroup.com

VICTORIA State Government
Environment, Land, Water and Planning

This drawing has been prepared by, or compiled from information provided by, persons other than Victrack. To the maximum extent permissible by law, Victrack takes no responsibility for, and makes no representations in relation to, the completeness, accuracy or quality of any information contained in this drawing. Each user of this drawing releases Victrack from all and any loss, damage, cost, expense or liability in relation to the use of, or any reliance on, this drawing or the information contained in it.

All written dimensions take precedence over scaled dimensions.

This drawing is provided only for the information of the person or organisation to whom Victrack provides it. It may not be provided to, or used by, any other person without Victrack's prior written consent.

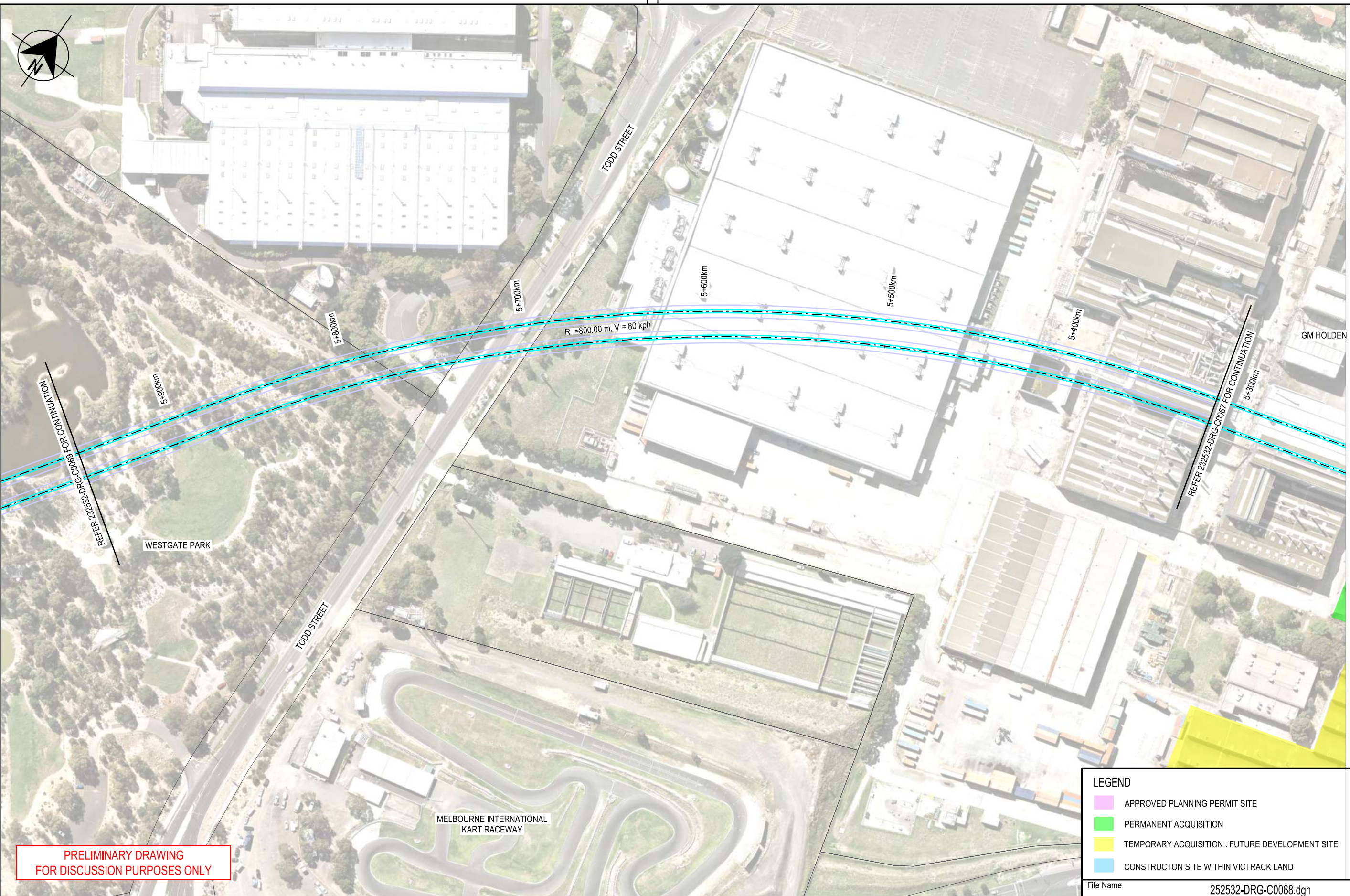
RAILWAY TRACK AND CIVIL
MELBOURNE
FISHERMANS BEND METRO
FEASIBILITY STUDY
PREFERRED ALIGNMENT OPTION 5A

Up Location East. North. ID#
Down Location East. North. ID#
Datum MGA Z55

Revised By	In Serv	Rev.	Date	Description	Designed	Checked	Ind. Rev.	Approv.
AURECON		P1	15.11.16	PRELIMINARY ISSUE - POST ALIGNMENT SELECTION WORK SHOP	R.M.H.	J.E.B.		

11/28/2016 9:57:33 AM

(DATE)
 (SIGNATURE)
 (BLOCK LETTERS)
 Certified By:



LEGEND	
	APPROVED PLANNING PERMIT SITE
	PERMANENT ACQUISITION
	TEMPORARY ACQUISITION : FUTURE DEVELOPMENT SITE
	CONSTRUCTION SITE WITHIN VICTRACK LAND

File Name 252532-DRG-C0068.dgn

9:57:43 AM
 11/28/2016

Revised By	In Serv	Rev.	Date	Description	Designed	Checked	Ind. Rev.	Approv.
AURECON		P1	15.11.16	PRELIMINARY ISSUE - POST ALIGNMENT SELECTION WORK SHOP	R.M.H.	J.E.B.		

Consultant

aurecon
www.aurecongroup.com

VICTORIA
State Government

Environment,
Land, Water
and Planning

This drawing has been prepared by, or compiled from information provided by, persons other than Victrack. To the maximum extent permissible by law, Victrack takes no responsibility for, and makes no representations in relation to, the completeness, accuracy or quality of any information contained in this drawing. Each user of this drawing releases Victrack from all and any loss, damage, cost, expense or liability in relation to the use of, or any reliance on, this drawing or the information contained in it.

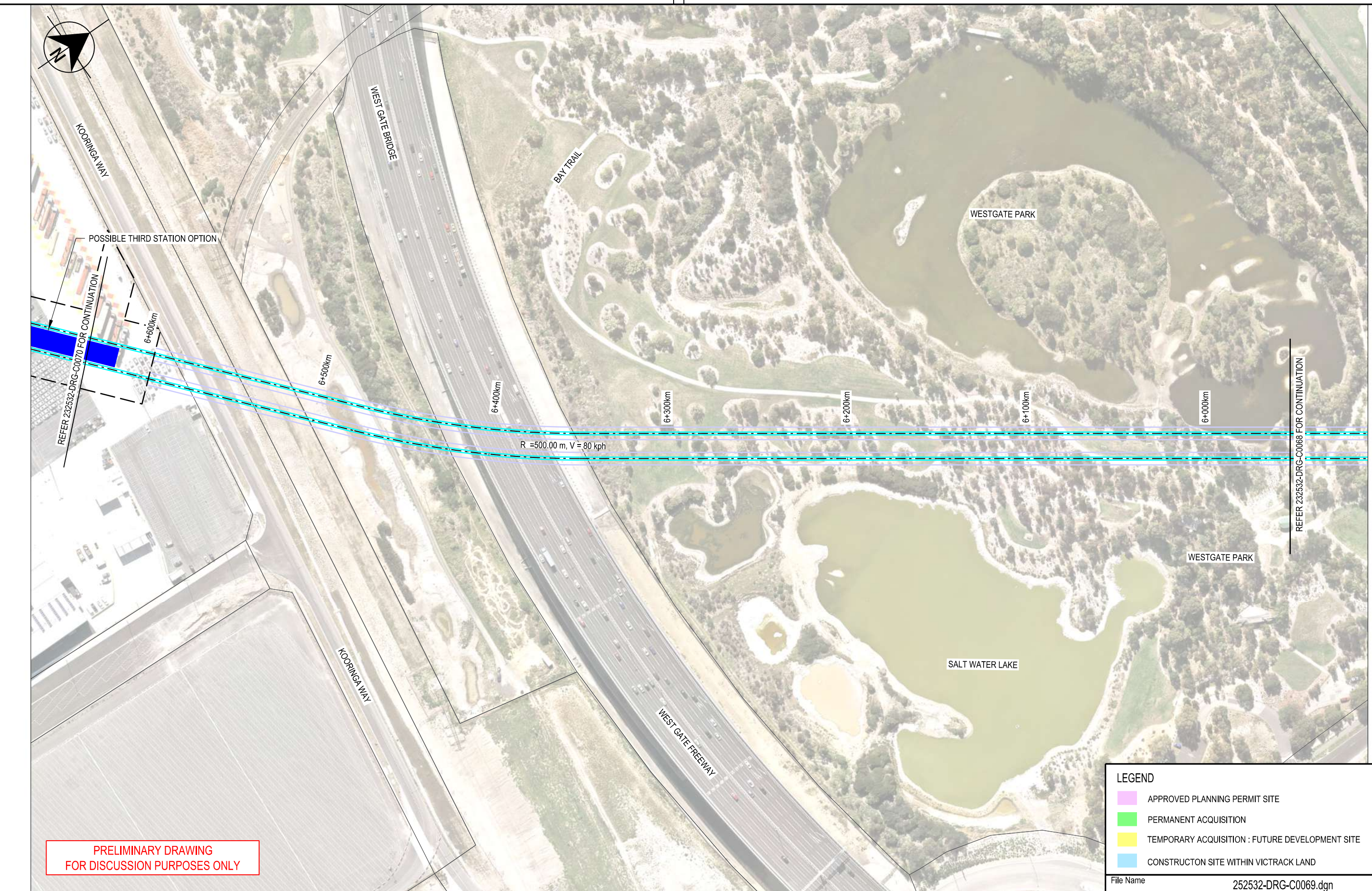
All written dimensions take precedence over scaled dimensions.

This drawing is provided only for the information of the person or organisation to whom Victrack provides it. It may not be provided to, or used by, any other person without Victrack's prior written consent.

RAILWAY TRACK AND CIVIL		
MELBOURNE		
FISHERMANS BEND METRO		
FEASIBILITY STUDY		
PREFERRED ALIGNMENT OPTION 5A		
Up Location	Down Location	Datum
East.	East.	MGA Z55
North.	North.	
ID#	ID#	

VicTrack <small>ACCESS</small>		Drawn By	Designed By
		R.HOWELLS	R.HOWELLS
File Name 252532-DRG-C0068.dgn		Checked By	Ind. Review
		J.BELCHER	
Sheet No. 01 of 01		Approved	Approval Date
In Serv.		Drawing Number	Revision
			P1
Scale 1:2000	Sheet Size A3		

Certified By: (BLOCK LETTERS)
(SIGNATURE)
(DATE)



LEGEND	
	APPROVED PLANNING PERMIT SITE
	PERMANENT ACQUISITION
	TEMPORARY ACQUISITION : FUTURE DEVELOPMENT SITE
	CONSTRUCTION SITE WITHIN VICTRACK LAND

File Name 252532-DRG-C0069.dgn

11/28/2016	9:57:51 AM																			
AURECON		P1	15.11.16	PRELIMINARY ISSUE - POST ALIGNMENT SELECTION WORK SHOP	R.M.H.	J.E.B.														
Revised By	In Serv	Rev.	Date	Description	Designed	Checked	Ind. Rev.	Approv.												

Consultant



www.aurecongroup.com



Environment, Land, Water and Planning

This drawing has been prepared by, or compiled from information provided by, persons other than Victrack. To the maximum extent permissible by law, Victrack takes no responsibility for, and makes no representations in relation to, the completeness, accuracy or quality of any information contained in this drawing. Each user of this drawing releases Victrack from all and any loss, damage, cost, expense or liability in relation to the use of, or any reliance on, this drawing or the information contained in it.

All written dimensions take precedence over scaled dimensions.


This drawing is provided only for the information of the person or organisation to whom Victrack provides it. It may not be provided to, or used by, any other person without Victrack's prior written consent.

RAILWAY TRACK AND CIVIL

MELBOURNE

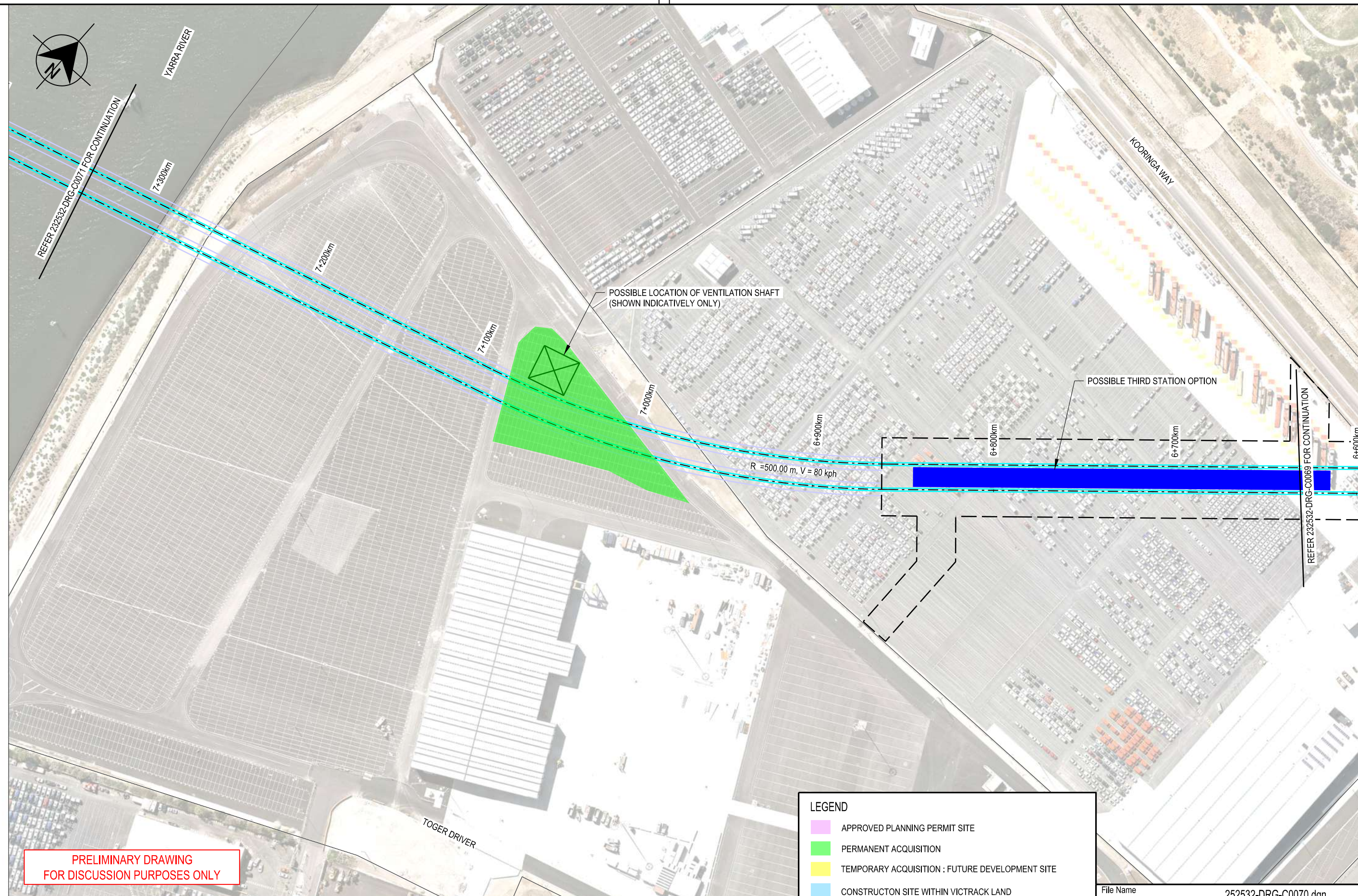
FISHERMANS BEND METRO
FEASIBILITY STUDY
PREFERRED ALIGNMENT OPTION 5A

Up Location East. North. ID#	Down Location East. North. ID#	Datum MGA Z55
------------------------------	--------------------------------	---------------



File Name 252532-DRG-C0069.dgn	Drawn By R.HOWELLS	Designed By R.HOWELLS
Sheet No. 01 of 01	Checked By J.BELCHER	Ind. Review
In Serv.	Approved	Approval Date
Scale 1:2000	Sheet Size A3	Drawing Number
		Revision P1

Certified By: (BLOCK LETTERS) (SIGNATURE) (DATE)



PRELIMINARY DRAWING FOR DISCUSSION PURPOSES ONLY

LEGEND	
	APPROVED PLANNING PERMIT SITE
	PERMANENT ACQUISITION
	TEMPORARY ACQUISITION : FUTURE DEVELOPMENT SITE
	CONSTRUCTION SITE WITHIN VICTRACK LAND

11/28/2016 9:57:57 AM

Revised By	In Serv	Rev.	Date	Description	Designed	Checked	Ind. Rev.	Approv.
AURECON		P1	15.11.16	PRELIMINARY ISSUE - POST ALIGNMENT SELECTION WORK SHOP	R.M.H.	J.E.B.		

Consultant

aurecon
www.aurecongroup.com

VICTORIA State Government | Environment, Land, Water and Planning

This drawing has been prepared by, or compiled from information provided by, persons other than Victrack. To the maximum extent permissible by law, Victrack takes no responsibility for, and makes no representations in relation to, the completeness, accuracy or quality of any information contained in this drawing. Each user of this drawing releases Victrack from all and any loss, damage, cost, expense or liability in relation to the use of, or any reliance on, this drawing or the information contained in it.

All written dimensions take precedence over scaled dimensions.

This drawing is provided only for the information of the person or organisation to whom Victrack provides it. It may not be provided to, or used by, any other person without Victrack's prior written consent.

RAILWAY TRACK AND CIVIL

MELBOURNE

FISHERMANS BEND METRO

FEASIBILITY STUDY

PREFERRED ALIGNMENT OPTION 5A

Up Location East. North. ID#	Down Location East. North. ID#	Datum MGA Z55
------------------------------	--------------------------------	---------------

File Name 252532-DRG-C0070.dgn

VicTrack ACCESS

Drawn By R.HOWELLS	Designed By R.HOWELLS
Checked By J.BELCHER	Ind. Review
Approved	Approval Date

File Name 252532-DRG-C0070.dgn

Sheet No. 01 of 01

In Serv.

Scale 1:2000 Sheet Size A3

Drawing Number

Revision **P1**

Certified By: (BLOCK LETTERS)
(SIGNATURE)
(DATE)



LEGEND

- APPROVED PLANNING PERMIT SITE
- PERMANENT ACQUISITION
- TEMPORARY ACQUISITION : FUTURE DEVELOPMENT SITE
- CONSTRUCTION SITE WITHIN VICTRACK LAND

File Name 252532-DRG-C0071.dgn

VicTrack		Drawn By R.HOWELLS	Designed By R.HOWELLS
File Name 252532-DRG-C0071.dgn		Checked By J.BELCHER	Ind. Review
Sheet No. 01 of 01		Approved	Approval Date
In Serv.		Drawing Number	
Scale 1:2000	Sheet Size A3	Revision P1	

RAILWAY TRACK AND CIVIL

MELBOURNE

FISHERMANS BEND METRO
FEASIBILITY STUDY
PREFERRED ALIGNMENT OPTION 5A

Up Location East North ID#	Down Location East North ID#	Datum MGA Z55
----------------------------	------------------------------	------------------

This drawing has been prepared by, or compiled from information provided by, persons other than Victrack. To the maximum extent permissible by law, Victrack takes no responsibility for, and makes no representations in relation to, the completeness, accuracy or quality of any information contained in this drawing. Each user of this drawing releases Victrack from all and any loss, damage, cost, expense or liability in relation to the use of, or any reliance on, this drawing or the information contained in it.

All written dimensions take precedence over scaled dimensions.

This drawing is provided only for the information of the person or organisation to whom Victrack provides it. It may not be provided to, or used by, any other person without Victrack's prior written consent.

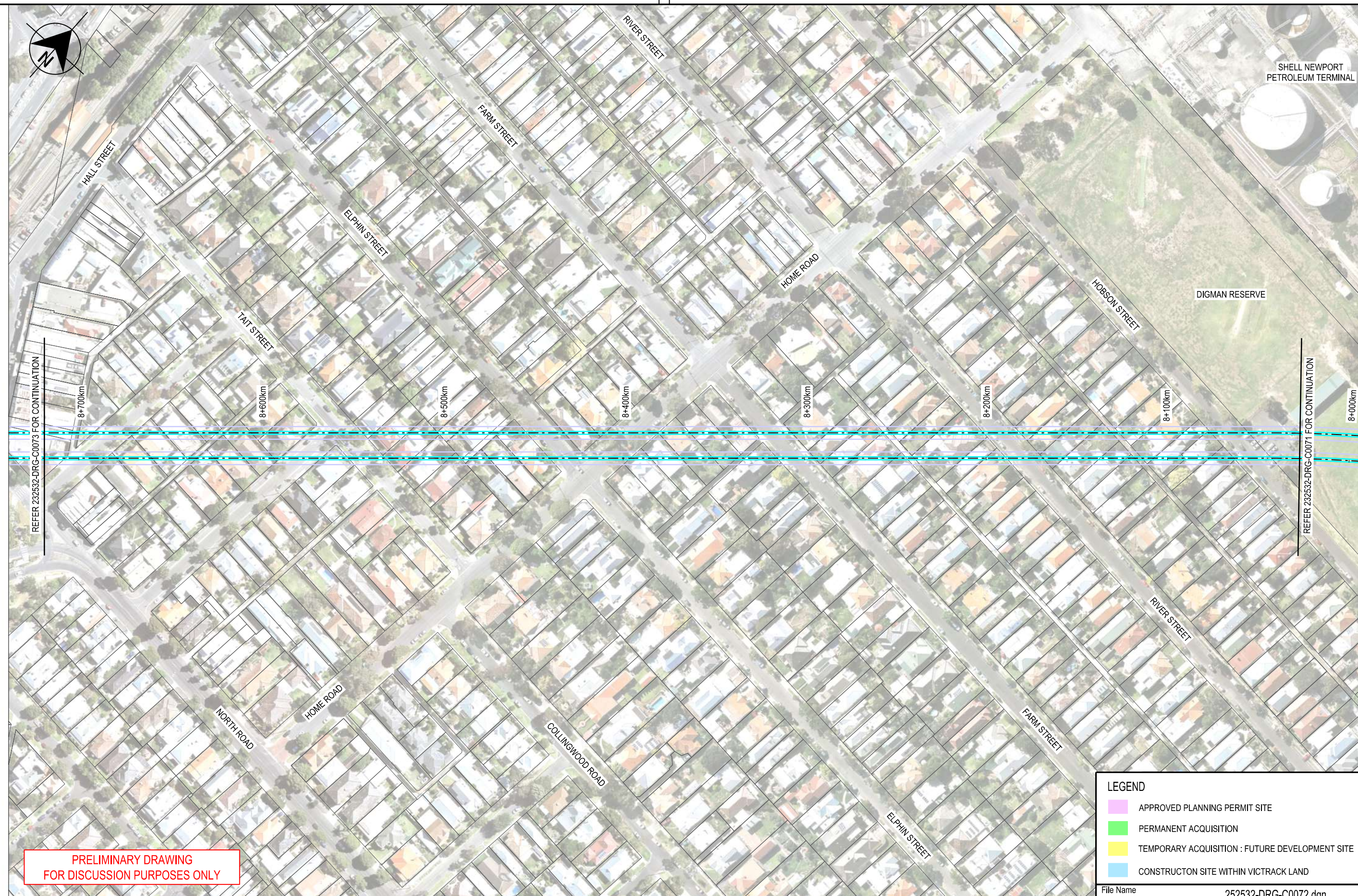
Consultant

aurecon
www.aurecongroup.com

VICTORIA
State Government | Environment, Land, Water and Planning

11/28/2016	10:03:48 AM	AURECON	P1	15.11.16	PRELIMINARY ISSUE - POST ALIGNMENT SELECTION WORK SHOP	R.M.H.	J.E.B.		
Revised By	In Serv	Rev.	Date	Description	Designed	Checked	Ind. Rev.	Approv.	

(DATE)
 (SIGNATURE)
 (BLOCK LETTERS)
 Certified By:



**PRELIMINARY DRAWING
FOR DISCUSSION PURPOSES ONLY**

LEGEND

- APPROVED PLANNING PERMIT SITE
- PERMANENT ACQUISITION
- TEMPORARY ACQUISITION : FUTURE DEVELOPMENT SITE
- CONSTRUCTION SITE WITHIN VICTRACK LAND

File Name 252532-DRG-C0072.dgn

9:58:10 AM

 11/28/2016

AURECON	P1	15.11.16	PRELIMINARY ISSUE - POST ALIGNMENT SELECTION WORK SHOP	R.M.H.	J.E.B.				
Revised By	In Serv	Rev.	Date	Description	Designed	Checked	Ind. Rev.	Approv.	

Consultant

aurecon

www.aurecongroup.com

Environment,
Land, Water
and Planning

This drawing has been prepared by, or compiled from information provided by, persons other than Victrack. To the maximum extent permissible by law, Victrack takes no responsibility for, and makes no representations in relation to, the completeness, accuracy or quality of any information contained in this drawing. Each user of this drawing releases Victrack from all and any loss, damage, cost, expense or liability in relation to the use of, or any reliance on, this drawing or the information contained in it.

All written dimensions take precedence over scaled dimensions.

This drawing is provided only for the information of the person or organisation to whom Victrack provides it. It may not be provided to, or used by, any other person without Victrack's prior written consent.

RAILWAY TRACK AND CIVIL
 MELBOURNE
 FISHERMANS BEND METRO
 FEASIBILITY STUDY
 PREFERRED ALIGNMENT OPTION 5A

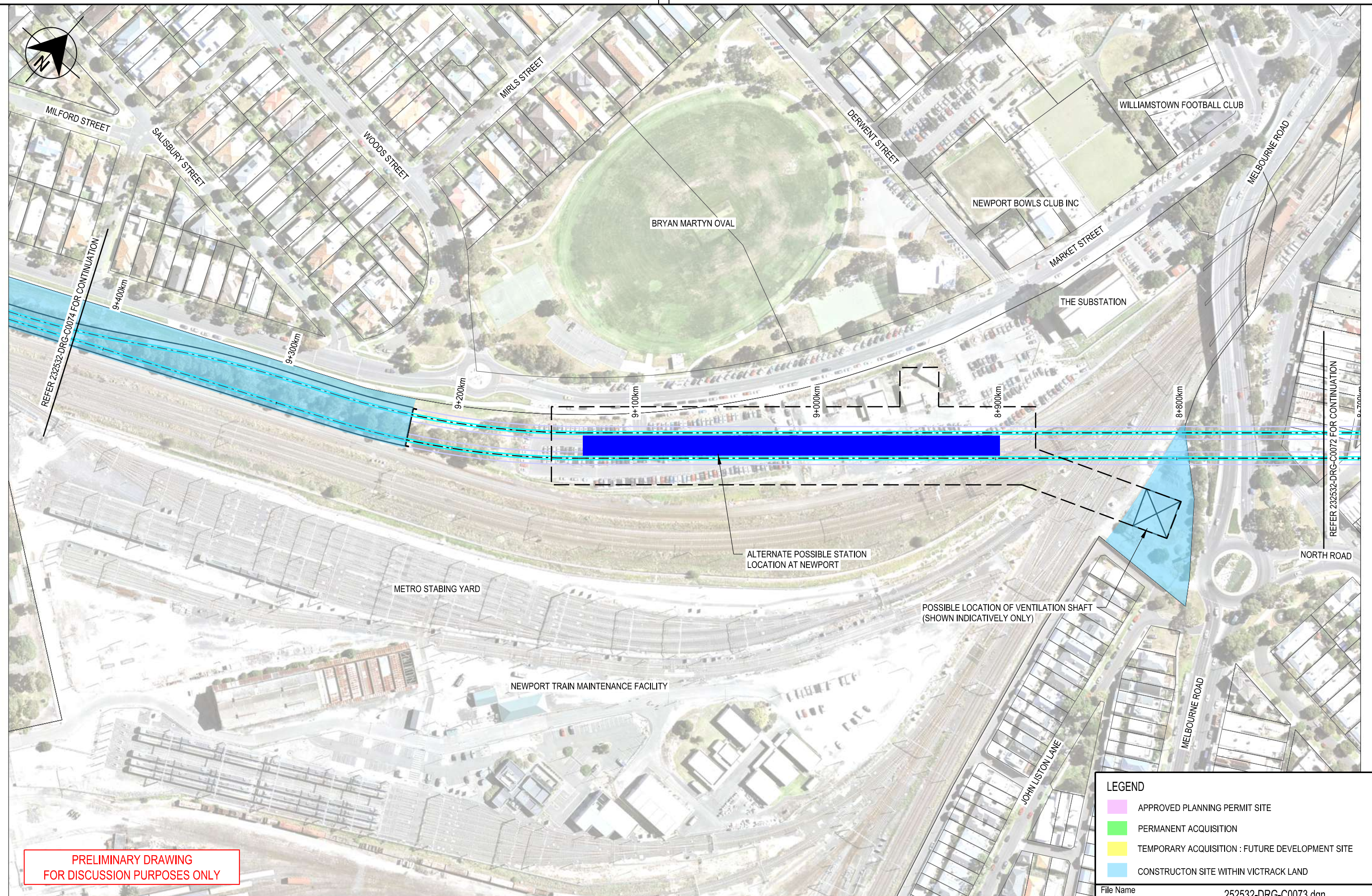
Up Location	Down Location	Datum
East.	East.	MGA Z55
North.	North.	
ID#	ID#	

VicTrack

ACCESS

File Name 252532-DRG-C0072.dgn	Drawn By R.HOWELLS	Designed By R.HOWELLS
Sheet No. 01 of 01	Checked By J.BELCHER	Ind. Review
In Serv.	Approved	Approval Date
Scale 1:2000	Sheet Size A3	Drawing Number
		P1

(DATE)
(SIGNATURE)
(BLOCK LETTERS)
Certified By:



**PRELIMINARY DRAWING
FOR DISCUSSION PURPOSES ONLY**

LEGEND	
	APPROVED PLANNING PERMIT SITE
	PERMANENT ACQUISITION
	TEMPORARY ACQUISITION : FUTURE DEVELOPMENT SITE
	CONSTRUCTION SITE WITHIN VICTRACK LAND

File Name 252532-DRG-C0073.dgn

11/28/2016	9:58:16 AM																			
AURECON	P1	15.11.16	PRELIMINARY ISSUE - POST ALIGNMENT SELECTION WORK SHOP	R.M.H.	J.E.B.															
Revised By	In Serv	Rev.	Date	Description	Designed	Checked	Ind. Rev.	Approv.												

Consultant

aurecon
www.aurecongroup.com

VICTORIA State Government | Environment, Land, Water and Planning

This drawing has been prepared by, or compiled from information provided by, persons other than Victrack. To the maximum extent permissible by law, Victrack takes no responsibility for, and makes no representations in relation to, the completeness, accuracy or quality of any information contained in this drawing. Each user of this drawing releases Victrack from all and any loss, damage, cost, expense or liability in relation to the use of, or any reliance on, this drawing or the information contained in it.

All written dimensions take precedence over scaled dimensions.

This drawing is provided only for the information of the person or organisation to whom Victrack provides it. It may not be provided to, or used by, any other person without Victrack's prior written consent.

**RAILWAY TRACK AND CIVIL
MELBOURNE
FISHERMANS BEND METRO
FEASIBILITY STUDY
PREFERRED ALIGNMENT OPTION 5A**

Up Location East. North. ID#	Down Location East. North. ID#	Datum MGA Z55
------------------------------	--------------------------------	---------------

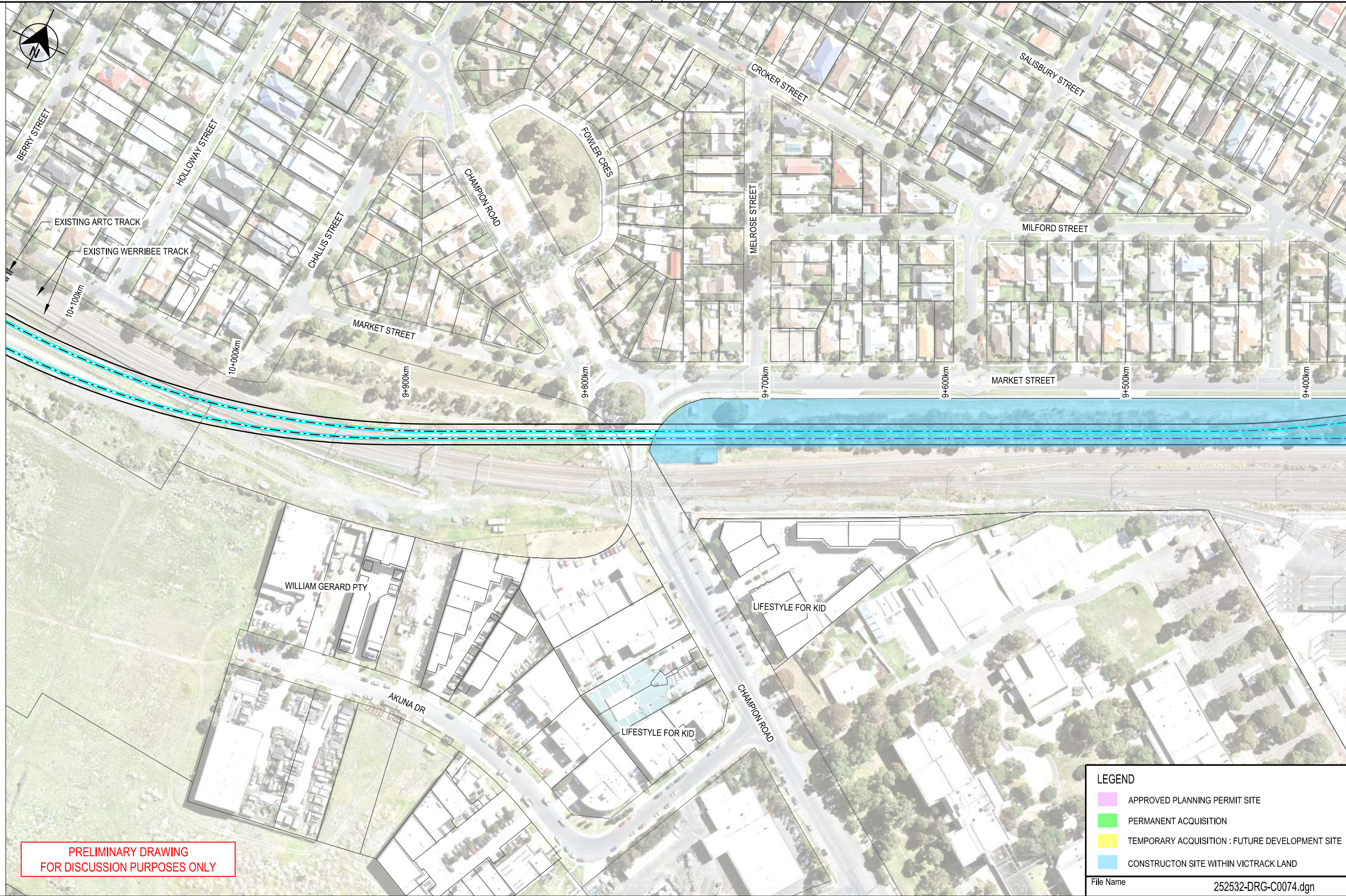
VicTrack
ACCESS

File Name 252532-DRG-C0073.dgn	Drawn By R.HOWELLS	Designed By R.HOWELLS
Sheet No. 01 of 01	Checked By J.BELCHER	Ind. Review
In Serv.	Approved	Approval Date
Scale 1:2000	Sheet Size A3	Drawing Number
		Revision P1

(DATE)
(SIGNATURE)
(BLOCK LETTERS)
Certified By:

REFER 232532-DRG-C0075 FOR CONTINUATION

REFER 232532-DRG-C0073 FOR CONTINUATION



**PRELIMINARY DRAWING
FOR DISCUSSION PURPOSES ONLY**

LEGEND	
	APPROVED PLANNING PERMIT SITE
	PERMANENT ACQUISITION
	TEMPORARY ACQUISITION : FUTURE DEVELOPMENT SITE
	CONSTRUCTION SITE WITHIN VICTRACK LAND

File Name 252532-DRG-C0074.dgn

9:58:21 AM								
11/28/2016	AURECON	P1	15.11.16	PRELIMINARY ISSUE - POST ALIGNMENT SELECTION WORK SHOP	R.M.H.	J.E.B.		
	Revised By	In Serv	Rev.	Date	Description	Designed	Checked	Ind. Rev. Approv.

Consultant



www.aurecongroup.com



Environment, Land, Water and Planning


This drawing has been prepared by, or compiled from information provided by, persons other than Victrack. To the maximum extent permissible by law, Victrack takes no responsibility for, and makes no representations in relation to, the completeness, accuracy or quality of any information contained in this drawing. Each user of this drawing releases Victrack from all and any loss, damage, cost, expense or liability in relation to the use of, or any reliance on, this drawing or the information contained in it.

All written dimensions take precedence over scaled dimensions.

This drawing is provided only for the information of the person or organisation to whom Victrack provides it. It may not be provided to, or used by, any other person without Victrack's prior written consent.

**RAILWAY TRACK AND CIVIL
MELBOURNE
FISHERMANS BEND METRO
FEASIBILITY STUDY
PREFERRED ALIGNMENT OPTION 5A**

Up Location East. North. ID#	Down Location East. North. ID#	Datum MGA Z55
------------------------------	--------------------------------	---------------



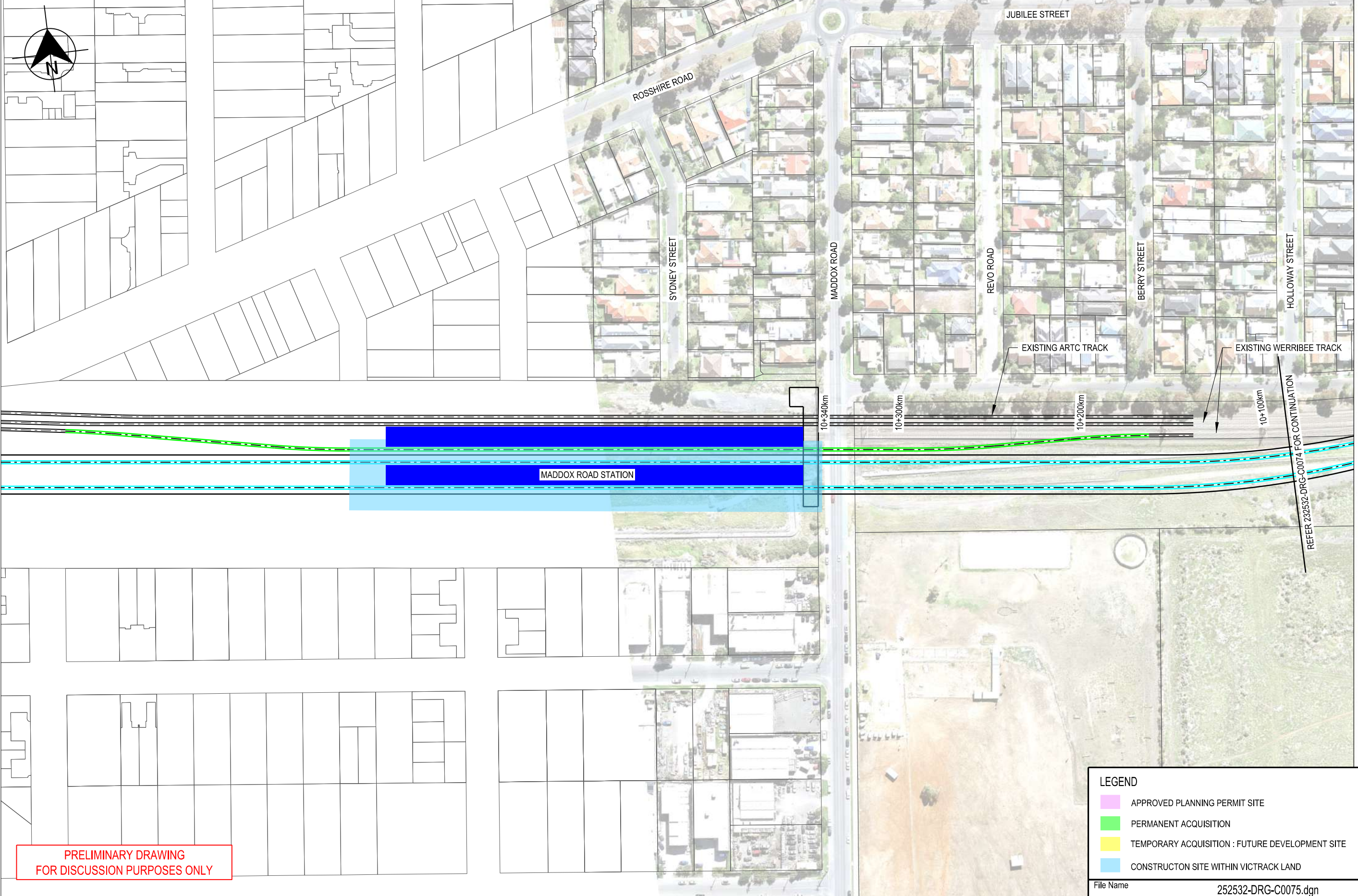
File Name 252532-DRG-C0074.dgn	Drawn By R.HOWELLS	Designed By R.HOWELLS
Sheet No. 01 of 01	Checked By J.BELCHER	Ind. Review
In Serv.	Approved	Approval Date
Scale 1:2000	Sheet Size A3	Drawing Number
		Revision P1

Certified By:

(BLOCK LETTERS)

(SIGNATURE)

(DATE)



PRELIMINARY DRAWING FOR DISCUSSION PURPOSES ONLY

LEGEND	
	APPROVED PLANNING PERMIT SITE
	PERMANENT ACQUISITION
	TEMPORARY ACQUISITION : FUTURE DEVELOPMENT SITE
	CONSTRUCTION SITE WITHIN VICTRACK LAND

File Name 252532-DRG-C0075.dgn

Revised By	In Serv	Rev.	Date	Description	Designed	Checked	Ind. Rev.	Approv.
AURECON		P1	15.11.16	PRELIMINARY ISSUE - POST ALIGNMENT SELECTION WORK SHOP	R.M.H.	J.E.B.		

Consultant

www.aurecongroup.com

Environment, Land, Water and Planning

This drawing has been prepared by, or compiled from information provided by, persons other than Victrack. To the maximum extent permissible by law, Victrack takes no responsibility for, and makes no representations in relation to, the completeness, accuracy or quality of any information contained in this drawing. Each user of this drawing releases Victrack from all and any loss, damage, cost, expense or liability in relation to the use of, or any reliance on, this drawing or the information contained in it.

All written dimensions take precedence over scaled dimensions.

This drawing is provided only for the information of the person or organisation to whom Victrack provides it. It may not be provided to, or used by, any other person without Victrack's prior written consent.

RAILWAY TRACK AND CIVIL

MELBOURNE

FISHERMANS BEND METRO
FEASIBILITY STUDY
PREFERRED ALIGNMENT OPTION 5A

Up Location East. North. ID#	Down Location East. North. ID#	Datum MGA Z55
------------------------------	--------------------------------	---------------

File Name 252532-DRG-C0075.dgn

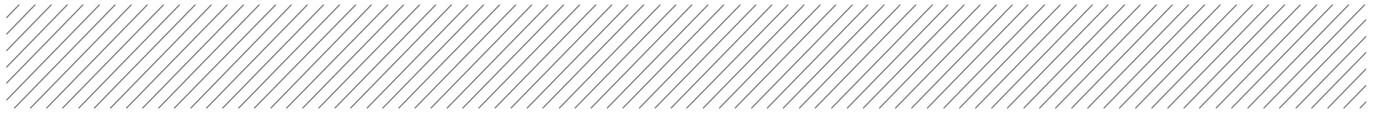
Sheet No. 01 of 01

In Serv.

Scale 1:2000 Sheet Size A3

Drawn By R.HOWELLS	Designed By R.HOWELLS
Checked By J.BELCHER	Ind. Review
Approved	Approval Date
Drawing Number	Revision P1

11/28/2016 9:58:24 AM



Appendix B

Golders High Level Geotechnical Input 2012