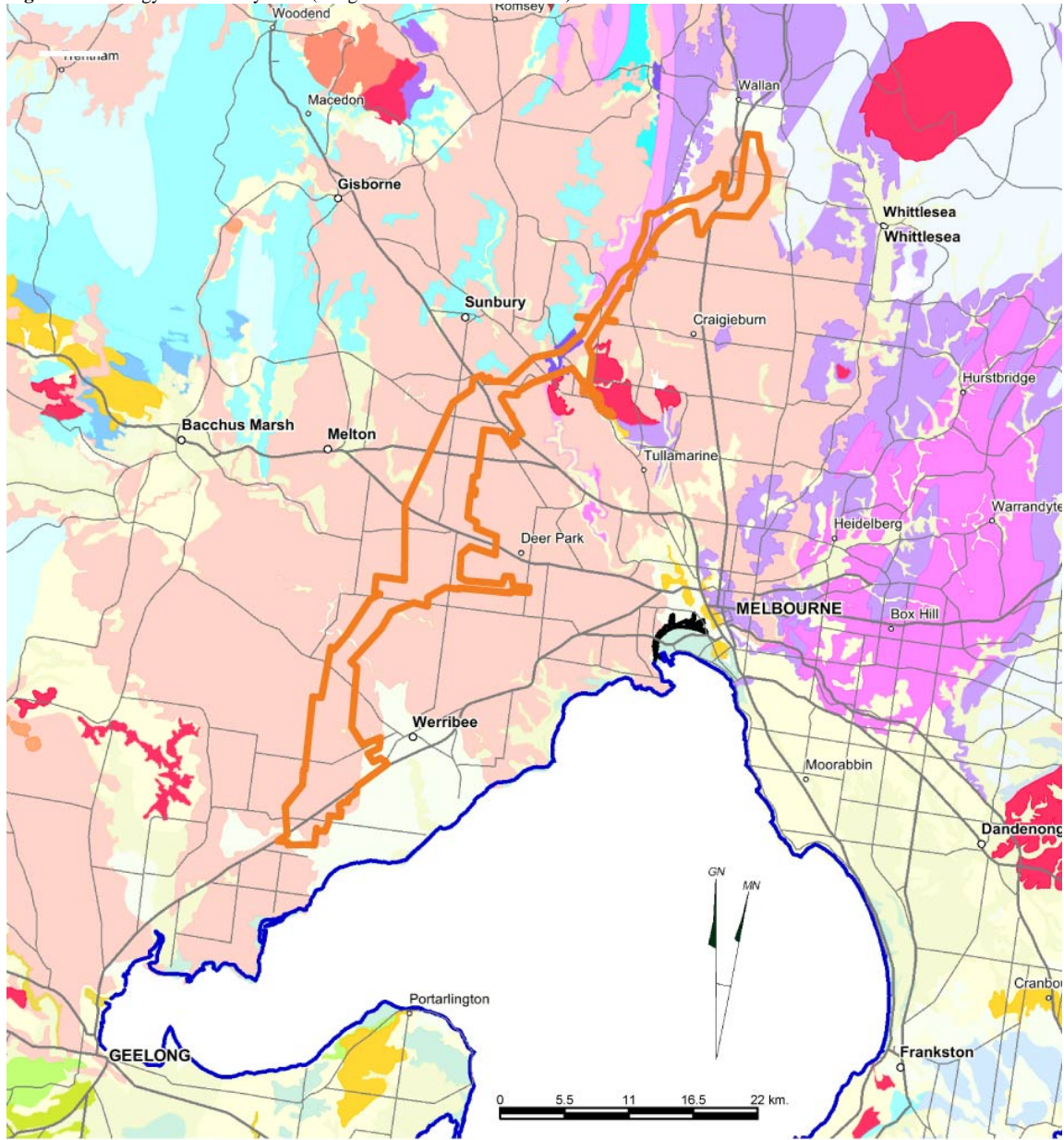


PART 3 - FIGURES

Figure 1: Geology of the Study Area (Image modified from GEOVIC).



Legend

<p>TOWNS</p> <ul style="list-style-type: none"> ○ Major Town ○ Large Town ○ Town — Roads (500K) — Major Roads (cont) 			<p>Other Roads</p> <p>Geological Polygons 1M</p> <ul style="list-style-type: none"> Qa Unnamed alluvium Qdi Unnamed coastal dune deposits Na Unnamed incised alluvium Qns Unnamed scoria deposits (cont) SDh Unnamed Sxm Melbourne Formation Sxs Springfield Sandstone Sxa Andersons Creek Formation Sxd Deep Creek Siltstone Sxr Kerrie Conglomerate (cont) 			<ul style="list-style-type: none"> Qn Newer Volcanic Group Nbh Hanson Plain Sand Nh Heytesbury Group -Pa Unnamed alluvium -Po Older Volcanic Group Pxb Bacchus Marsh Formation (cont) Os Sunbury Group Ox Undifferentiated Ordovician sedimentary rocks Oc Castlemaine Group Ocd Castlemaine Group - Darriwillian Ocl Castlemaine Group - Lancefieldian 		
<p>Dgl Undifferentiated Late Devonian granitic rocks</p> <p>Dm Macedon Group</p> <p>Dj Mount Dandenong Igneous Complex</p> <p>Dxh Humevale Siltstone</p> <p>Sx-Dx Undifferentiated Silurian-Devonian Rocks (cont)</p>								

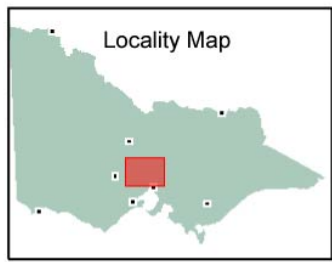


Figure 2: RAP and RAP Applicant boundaries (N.B. there are overlapping boundaries so please see Figures 3 - 8 for detailed boundary information).

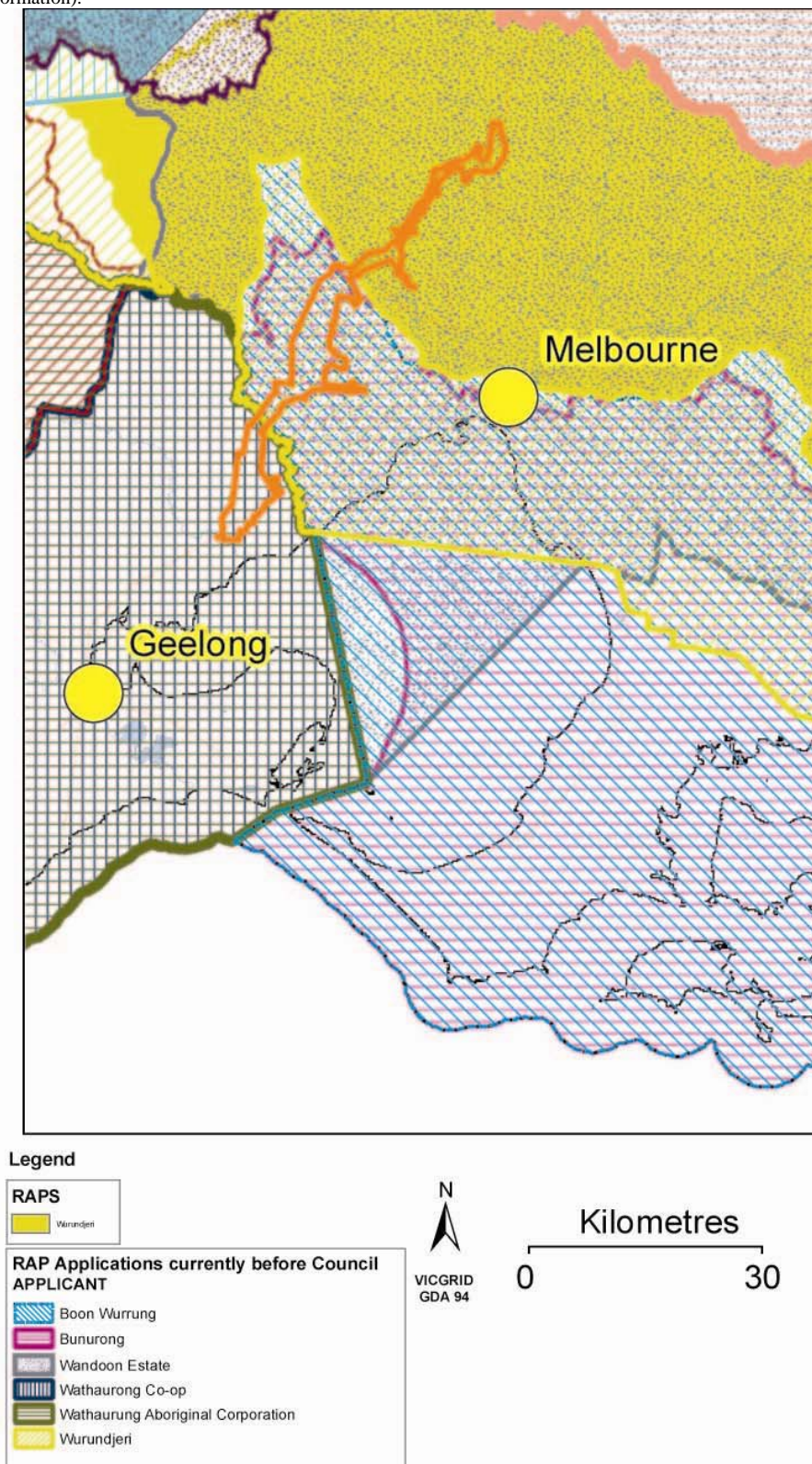


Figure 3: Boon Wurrung Foundation Ltd (BWF) RAP Application boundary

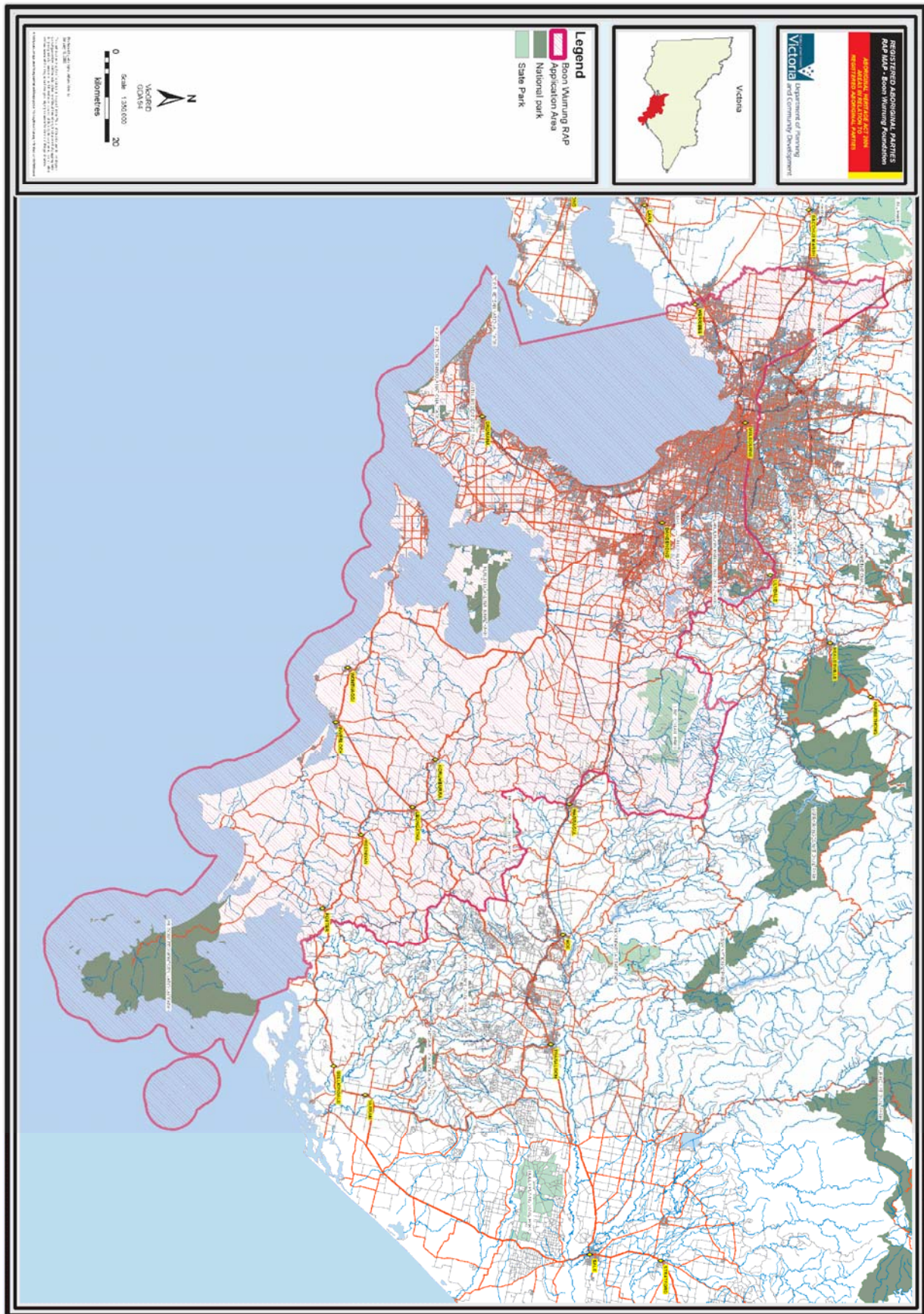


Figure 6: Wathaurung Aboriginal Corporation RAP Application boundary.

