

Victorian Autism Plan

Victorian State Government



Easy English





Hard words

This book has some hard words.

The first time we write a hard word

- the word is in **blue**

- we write what the hard word means.

You can get help with this book



You can get someone to help you

- read this book

- know what this book is about



- find more information.

About this book



Health
and Human
Services

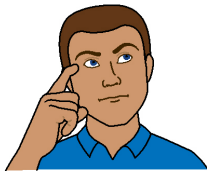
This book is written by the Department of Health and Human Services.

This book is about our **Autism** Plan.

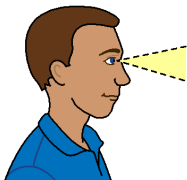


Autism is a disability that affects how someone

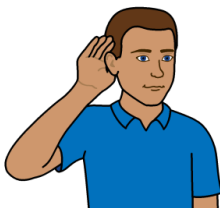
- talks and acts with other people
- experiences the world around them.



For example differences in the way autistic people



- see



- hear

- smell

- touch



- taste.



We know that

- about 1 in every 100 people in Victoria have autism



- more people might have autism but do **not** know it



- autistic people all have different needs and experiences.



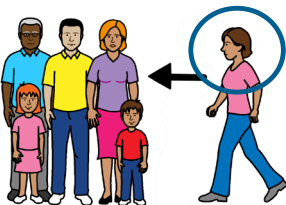
Autistic people might need more support

- at school



- to find a job

- at work



- to feel part of their community.

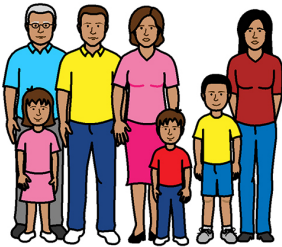


We asked the **autism community** about their experiences with autism.



The autism community can include

- autistic people

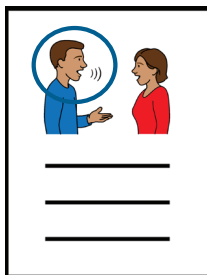


- families

- carers



- autism organisations.



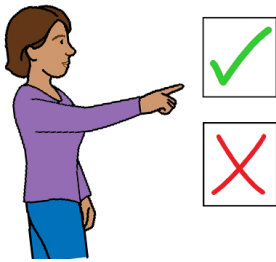
We used the information to help make this plan.

About the plan

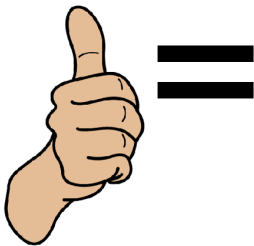


The plan will help autistic people to

- feel part of their community



- have choices



- be treated fairly



- have the help they need to live a good life.



We will help more people in Victoria understand autism and give better support to autistic people

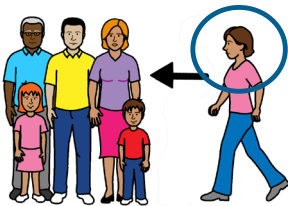
There are 4 areas of the plan.

1. **Inclusive communities**



This means

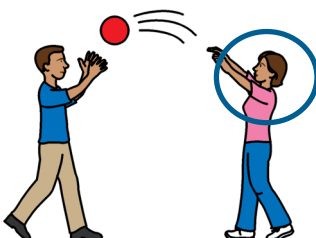
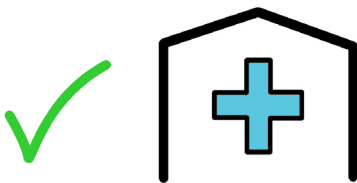
- teaching people about autism
- help for autistic people to be independent
- help to make it easier for autistic people in the workplace
- help for autistic people to be part of their community.



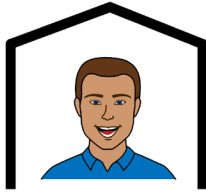
2. **Health, housing and wellbeing**

This means help for autistic people to

- have better health services and supports
- find somewhere where to live
- join in and play sports.



3. Fairness and safety



This means help for autistic people

- to feel safe
- who come from different countries to be a part of their community
- who are Aboriginal to have better services and support
- who break the law and get in trouble with the police.



4. Contributing lives

This means help for autistic people to

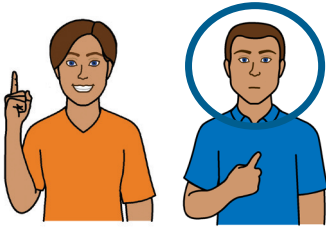
- get a good education
- find a good job
- be a leader in their community.



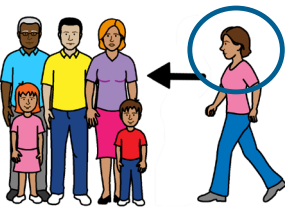
We will do work in each area to make things happen.

How we will make change happen

1. Inclusive communities



We will help the community better understand autistic people.



We will help autistic people be part of their culture and community.



We will help autistic people to use public transport safely.

We will help autistic people

- find good jobs

and

- work in places that support them.



2. Health, housing and wellbeing



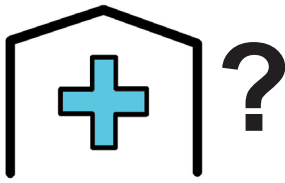
We will help people to use health services to

- find out if they have autism

and

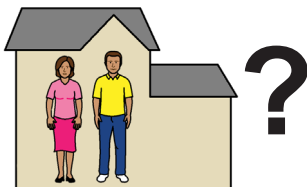


- get good support if they have autism.

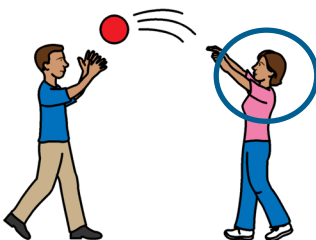


We will find out more about the health and wellbeing needs of autistic people.

For example, mental health needs.



We will find out more about the housing needs of autistic people.

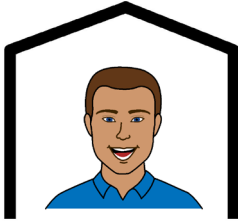


We will help more autistic people to play sport and do activities.



We will help more autistic people to understand and use the NDIS.

3. Fairness and safety

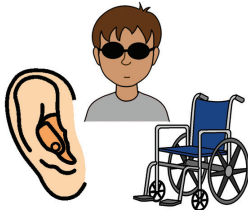


We will help autistic people to feel safe in their community.



We will help autistic people to get support if they break the law and get in trouble with the police.

We will better help autistic people with **complex needs** and their families.



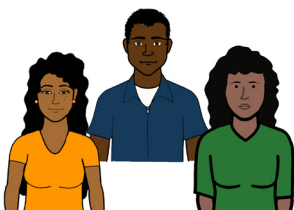
Complex needs might mean

- they have a disability

and



- their behaviour can hurt them or someone else.

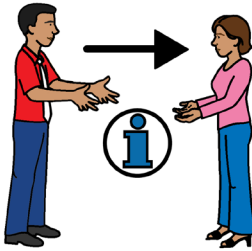


We will help autistic people from different communities to feel included. For example, Aboriginal and Torres Strait Islander people.

4. Contributing lives



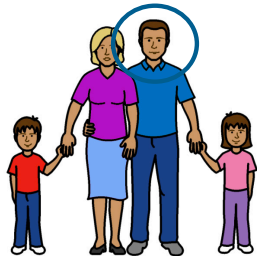
We will help schools to better support autistic students.



We will give more information to autistic students and their families about school and school supports.



We will find ways to help more autistic people find a good job.



We will find ways to help more autistic people who are parents.



We will help autistic people to be leaders

- at work
- at school
- in their community.

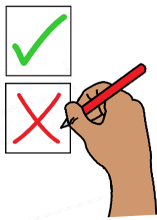
How we know the plan works



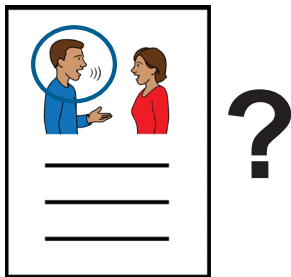
We want the plan to work well.



We will start to do the work in the plan.



We will check the work and make changes if we need to.



We will make a report about

- how the plan works

- what we did well



- what we can do better.

More information



For more information about our Autism Plan contact the Office for Disability.



Call 1300 650 172



Website www.dhhs.vic.gov.au



If you need help to speak or listen contact the department through the National Relay Service.

Call the help desk

1800 555 660

Go to the website

www.communications.gov.au/accesshub/nrs

© Scope (Aust) Ltd. You may use this document for your own personal, non-commercial purposes only. You must not use the document for any other purpose and must not copy, reproduce, digitise, communicate, adapt or modify the document, or any part of it, (or authorise any other person to do so) without the prior consent of Scope (Aust) Ltd.

Scope's Communication and Inclusion Resource Centre wrote the Easy English version in November, 2019.

To contact Scope call 1300 472 673 or visit www.scopeaust.org.au

To see the original contact the Victoria State Government Department of Health and Human Services.

The Picture Communication Symbols ©1981–2019 by Tobii Dynavox.

All Rights Reserved Worldwide. Used with permission.

Boardmaker® is a trademark of Tobii Dynavox.



Health
and Human
Services

