

VICTORIAN TRENDS FROM THE AEDC

RESULTS FROM 2009, 2012, 2018 AND 2021 DATA COLLECTIONS

The AEDC is a measure of young children's development in their first year of full-time school and collected by teachers across all school sectors. The 5th Wave of AEDC was collected in 2021, the first in 2009.

The AEDC data shows us how well children are faring and monitors developmental vulnerability over time. We can unpack these results with communities to understand what may be driving change.

Overall, the 2021 results for Victoria are relatively stable, which is positive in the context of disrupted learning and participation associated with the global pandemic.

AEDC DOMAINS

The AEDC domains are:

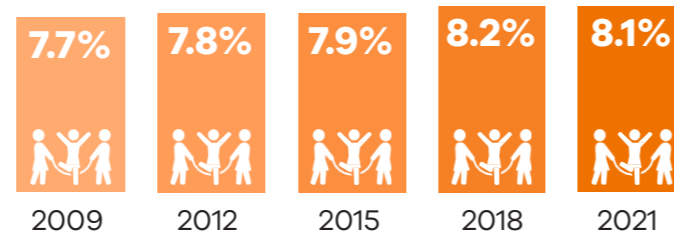
- Physical Health and Wellbeing
- Social Competence
- Language and Cognitive Skills
- Communication Skills and General Knowledge
- Emotional Maturity

In 2021 in Victoria, the highest developmental vulnerability was in social competence, and the lowest development vulnerability was in language and cognitive skills.

PHYSICAL HEALTH AND WELLBEING

Overall, developmental vulnerability in Physical Health and Wellbeing **increased** between 2009 and 2021.

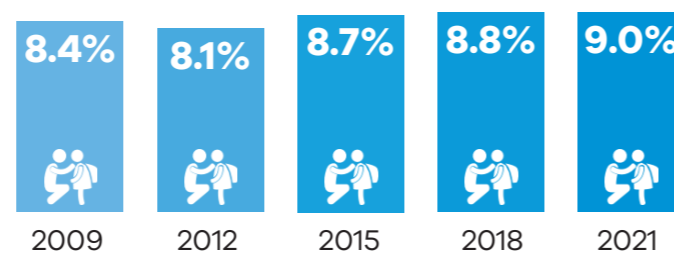
There has been no significant change since 2018.



SOCIAL COMPETENCE

Developmental vulnerability in Social Competence has fluctuated between 2009 and 2021, and overall it has **increased**.

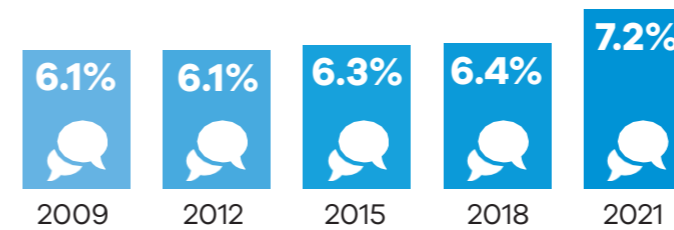
There has been no significant change since 2018.



LANGUAGE AND COGNITIVE SKILLS

Overall, developmental vulnerability in Language and Cognitive Skills has **increased** between 2009 and 2021.

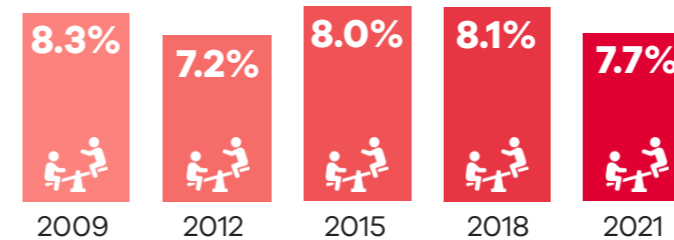
Developmental vulnerability in Language and Cognitive Skills has **increased** since 2018.



EMOTIONAL MATURITY

Developmental vulnerability in Emotional Maturity has fluctuated between 2009 and 2021, and overall it has **decreased**.

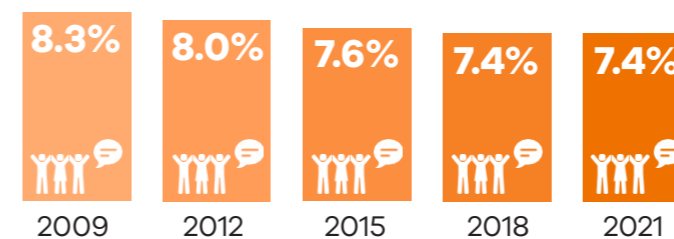
Developmental vulnerability in Emotional Maturity has **decreased** since 2018.



COMMUNICATION SKILLS AND GENERAL KNOWLEDGE

Overall, developmental vulnerability in Communication Skills and General Knowledge **decreased** between 2009 and 2021.

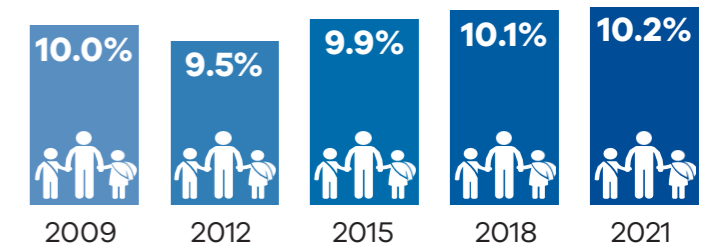
There has been no significant change since 2018.



VULNERABILITY ON TWO OR MORE DOMAINS

Children in Victoria had overall lower developmental vulnerability on two or more domains compared to the rest of Australia.

Overall, developmental vulnerability has not changed significantly since 2015. There has been no significant change since 2018.

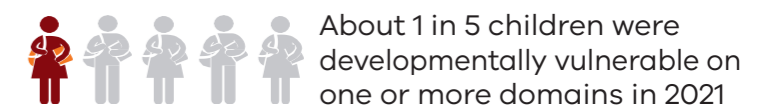
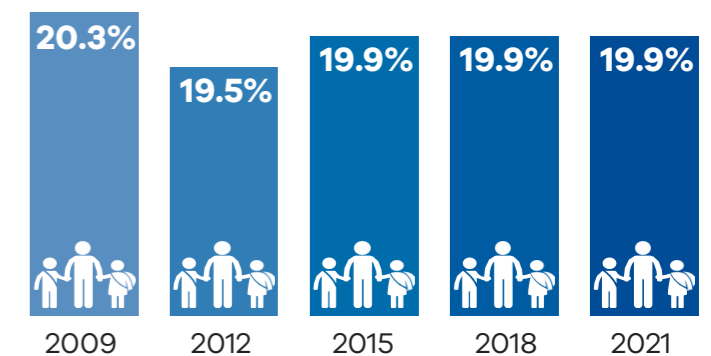


About 1 in 10 children were developmentally vulnerable on two or more domains in 2021

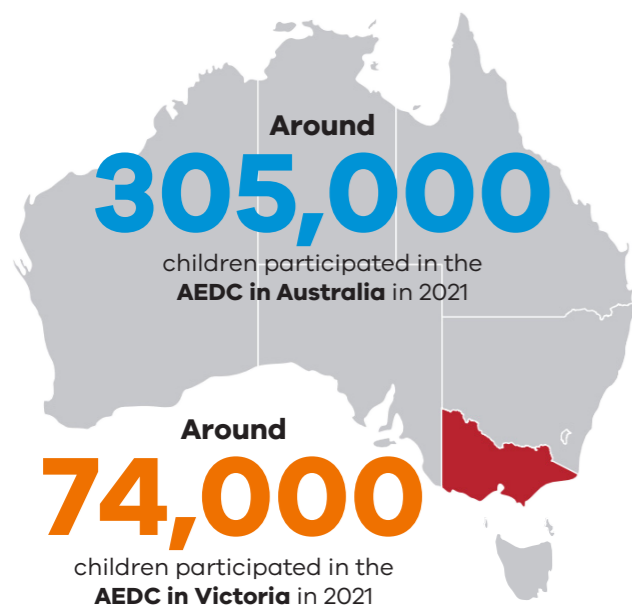
VULNERABILITY ON ONE OR MORE DOMAINS

Children in Victoria had overall lower developmental vulnerability on one or more domains compared to the rest of Australia.

Overall, developmental vulnerability on one or more domains has decreased between 2009 and 2021. There has been no significant change since 2018.



About 1 in 5 children were developmentally vulnerable on one or more domains in 2021



FIND OUT MORE

For further information contact Catherine Nolan, Victorian AEDC Coordinator at catherine.nolan@education.vic.gov.au

or visit

<https://www.vic.gov.au/australian-early-development-census-victoria>