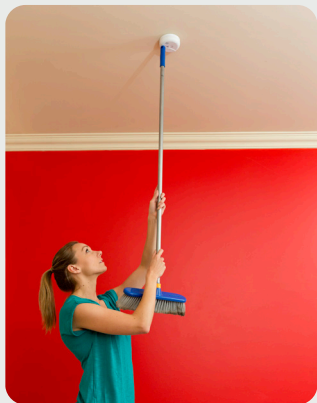


Smoke alarms

All residential properties in Victoria must have working smoke alarms.

Victorian Fire Services recommend smoke alarms with a 10-year lithium battery so you don't need to change the battery annually.

We recommend that smoke alarms are interconnected so when any alarm activates, all smoke alarms will sound, providing vital seconds for your loved ones to escape.



Test monthly

- Press the button
- Hold until the alarm beeps



Dust annually

- Dust or vacuum around cover of smoke alarm
- If applicable, replace your smoke alarm battery annually



Replace every 10 years

- All smoke alarms (hard-wired and battery powered) need to be replaced

Where do I install my smoke alarms?

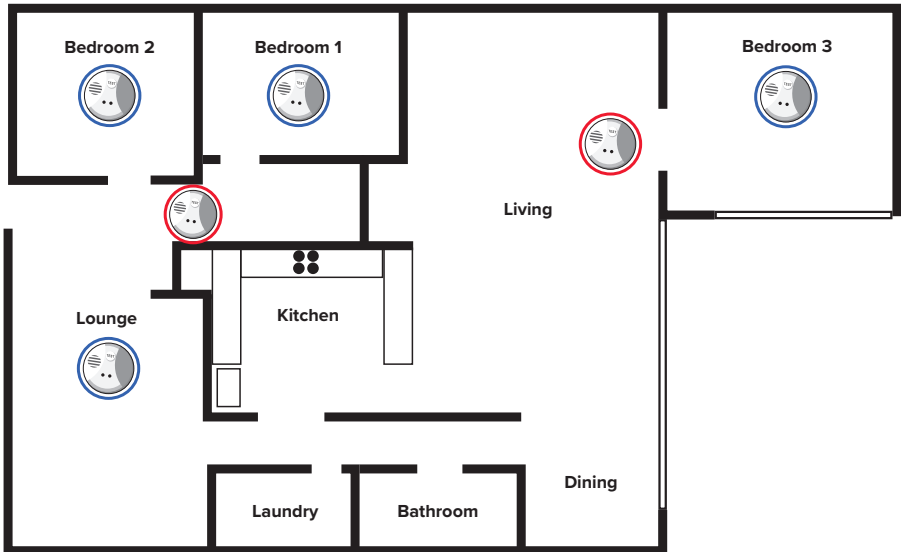
- Smoke alarms must be located outside each sleeping area and on each level of a house.
- Additional smoke alarms should be installed inside all bedrooms and living areas.
- Smoke alarms should be installed on the ceiling at least 30cm from the wall, preferably in the centre of the ceiling.
- Smoke alarms must meet Australian Standard AS3786.



Must be located between sleeping areas and the rest of the house



Additional smoke alarms should be inside all bedrooms and living areas



For more fire safety information visit frv.vic.gov.au and cfa.vic.gov.au